

Exhibit E-1:

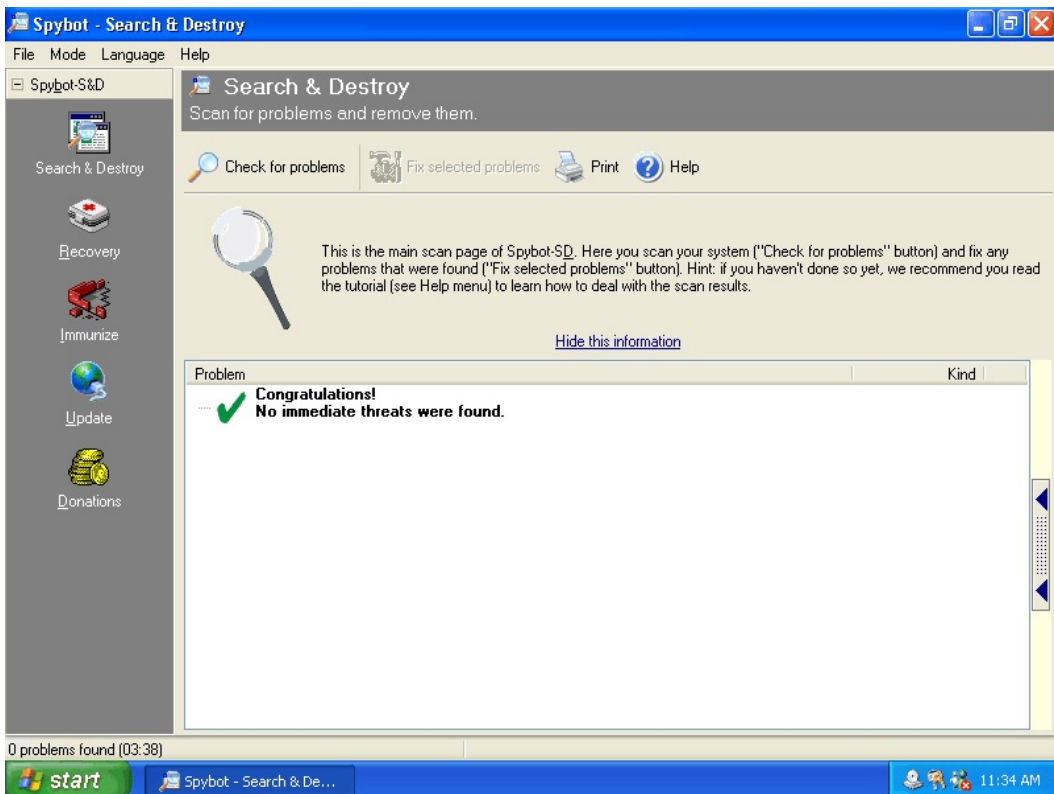


Exhibit E-2:

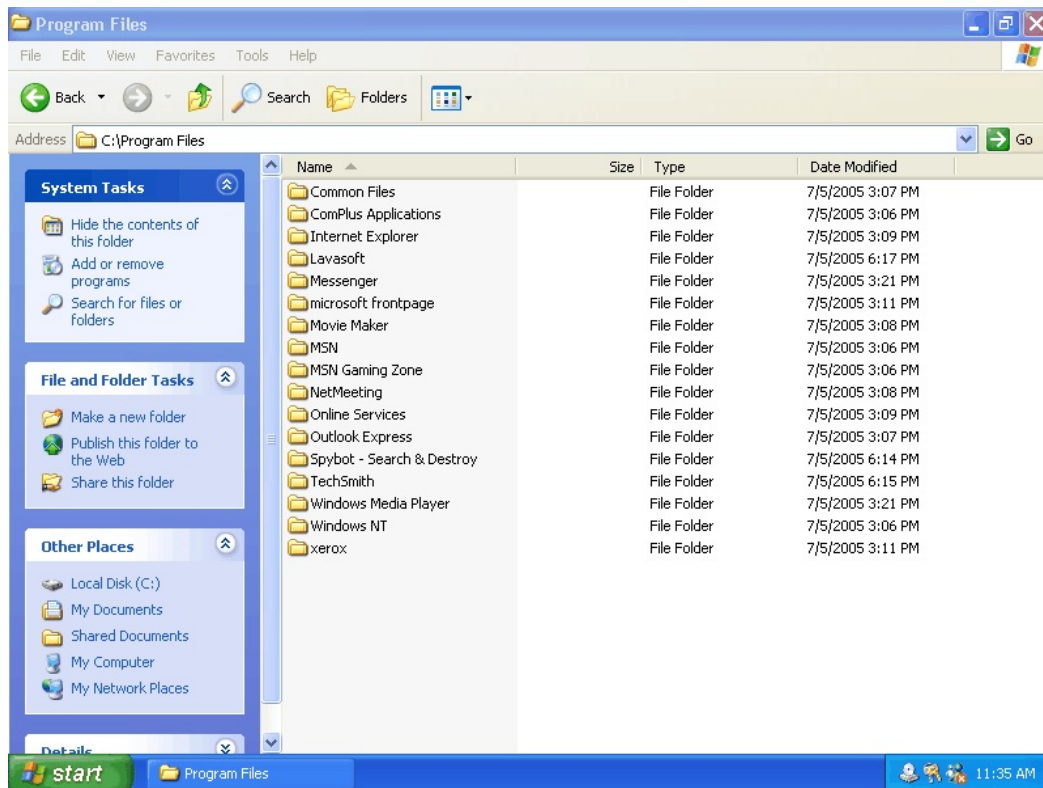


Exhibit E-3:

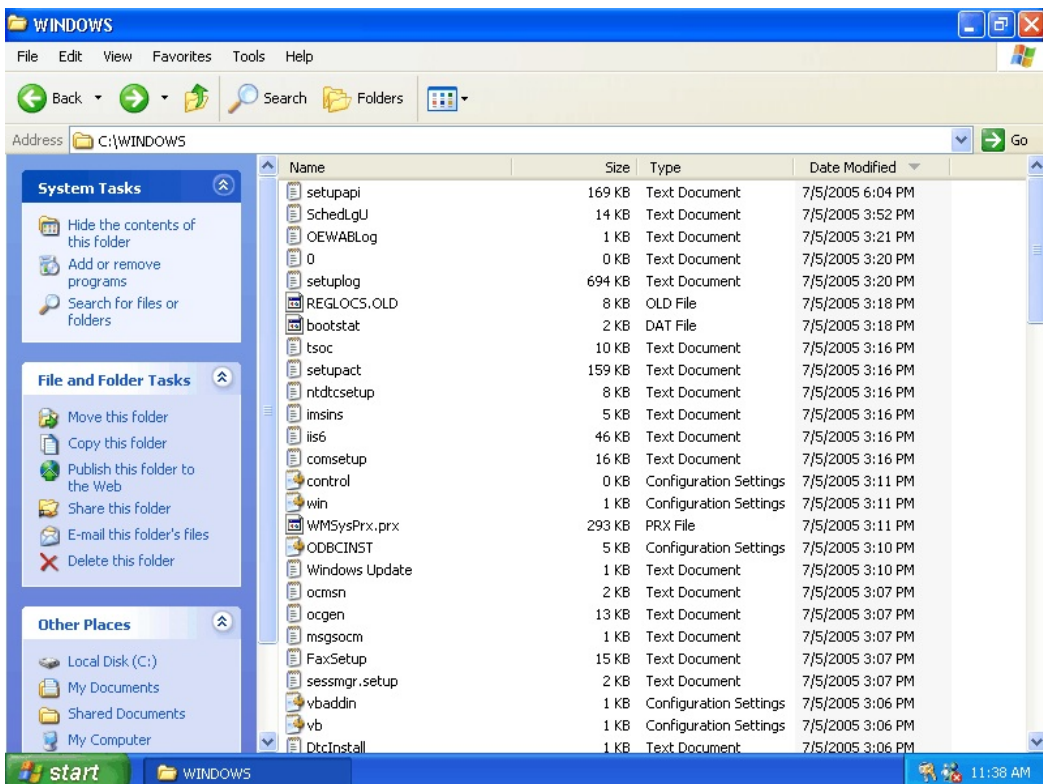


Exhibit E-3 (continued):

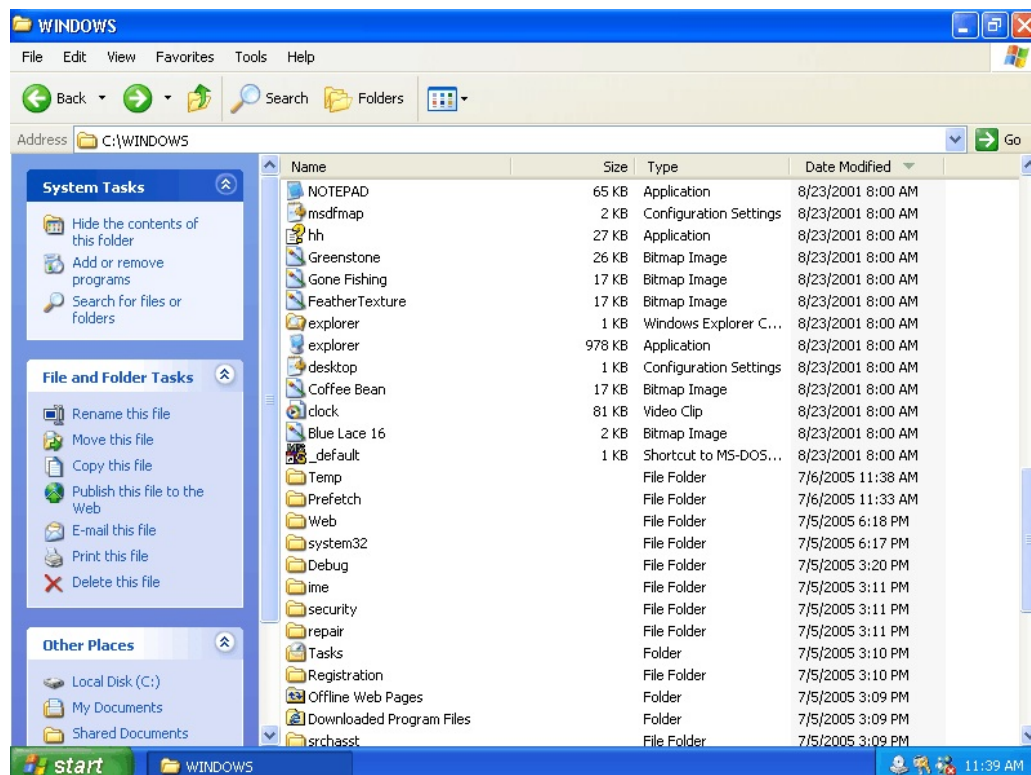
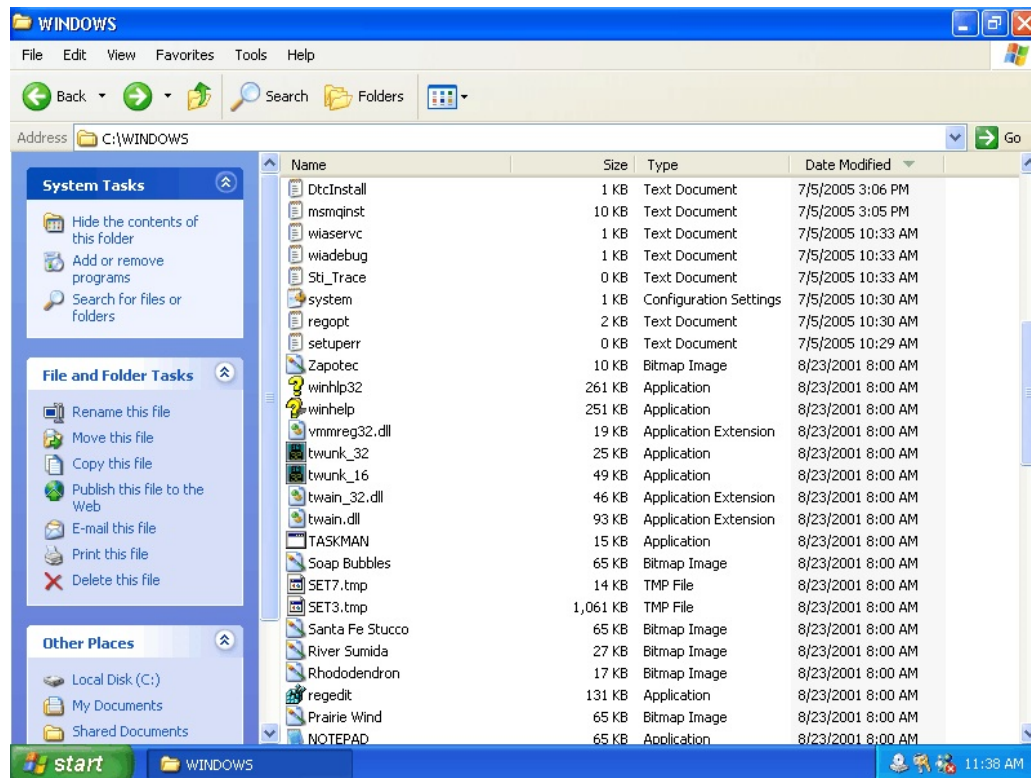


Exhibit E-3 (continued):

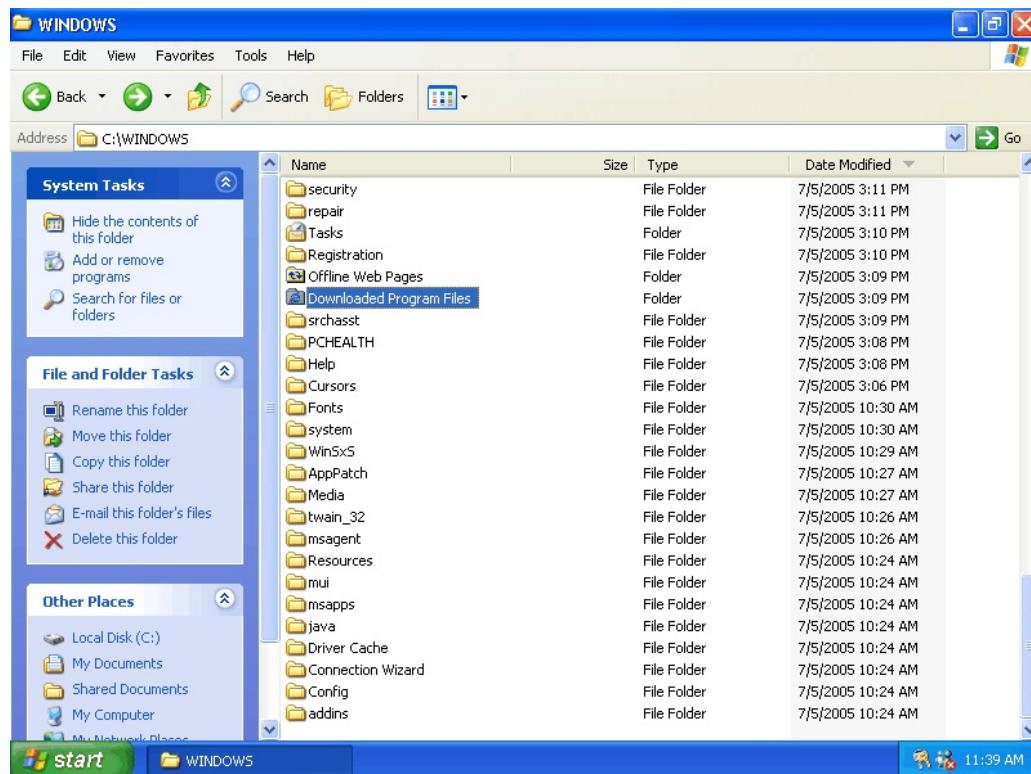


Exhibit E-4:

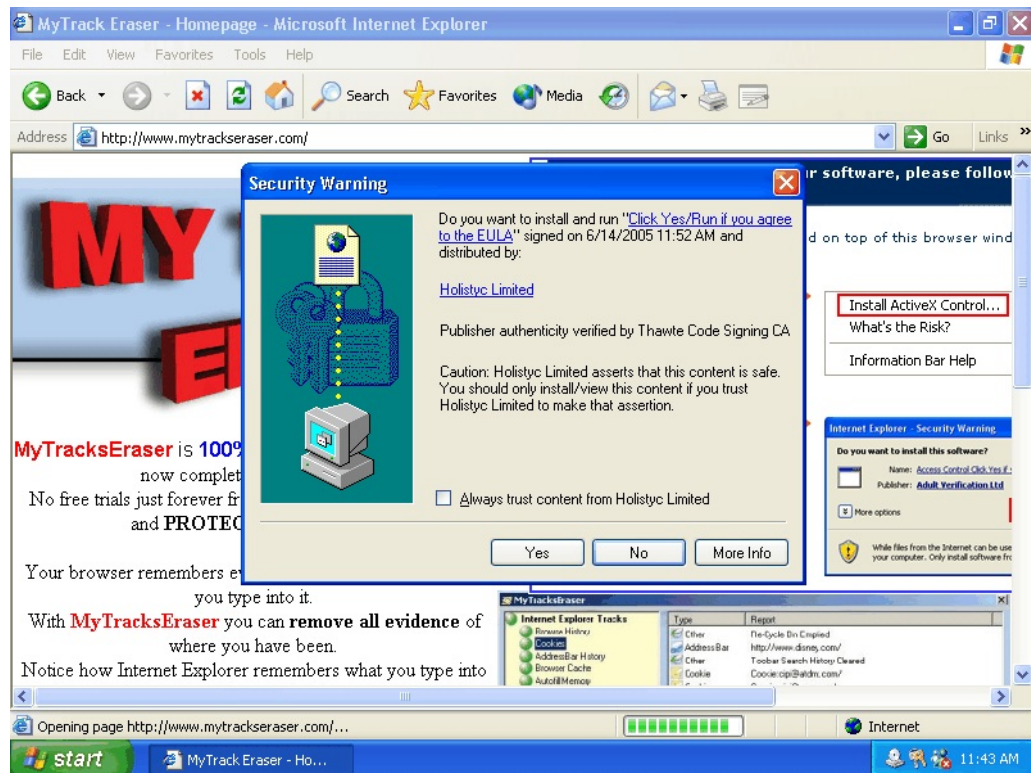


Exhibit E-5:

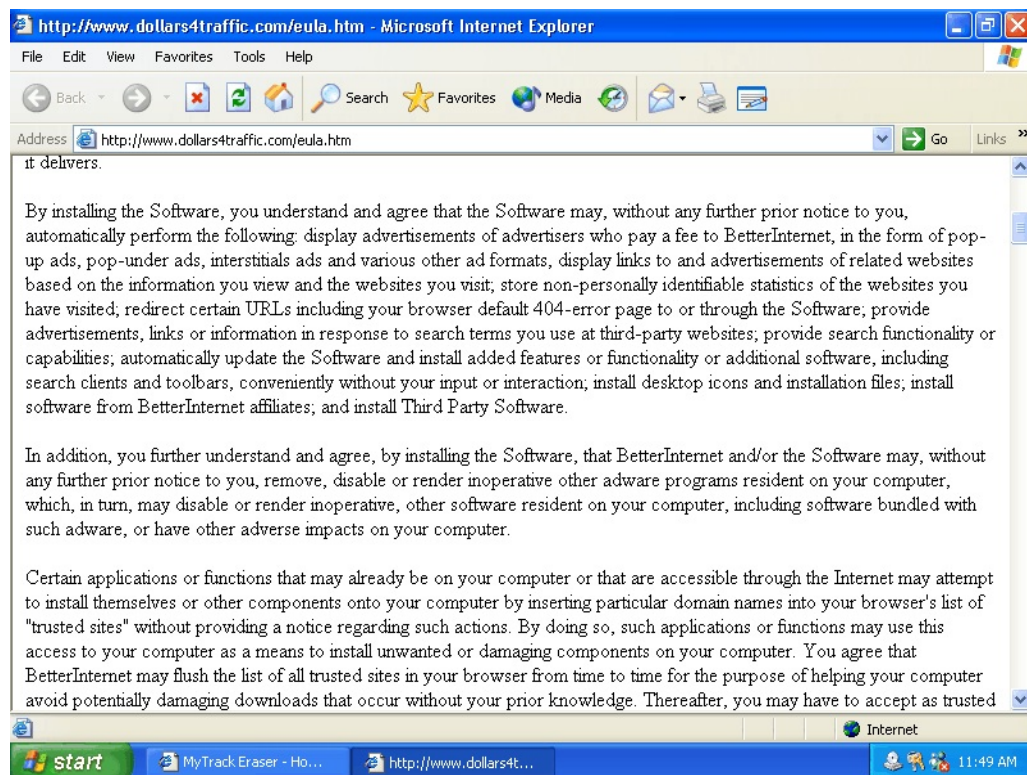
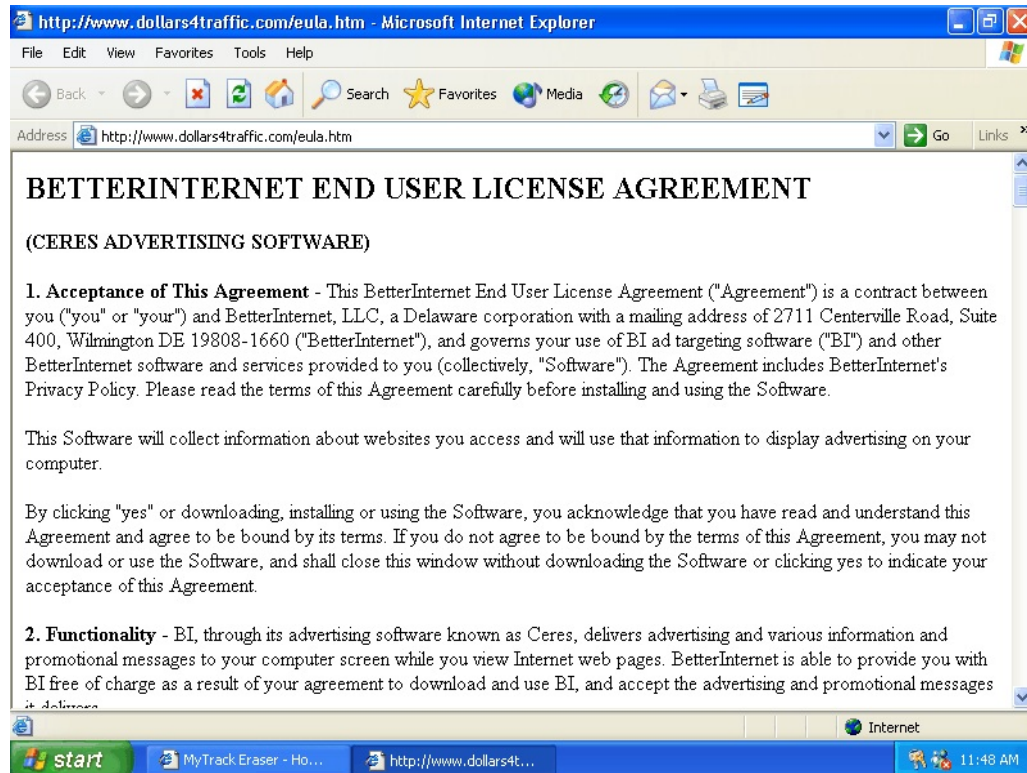


Exhibit E-5 (continued):

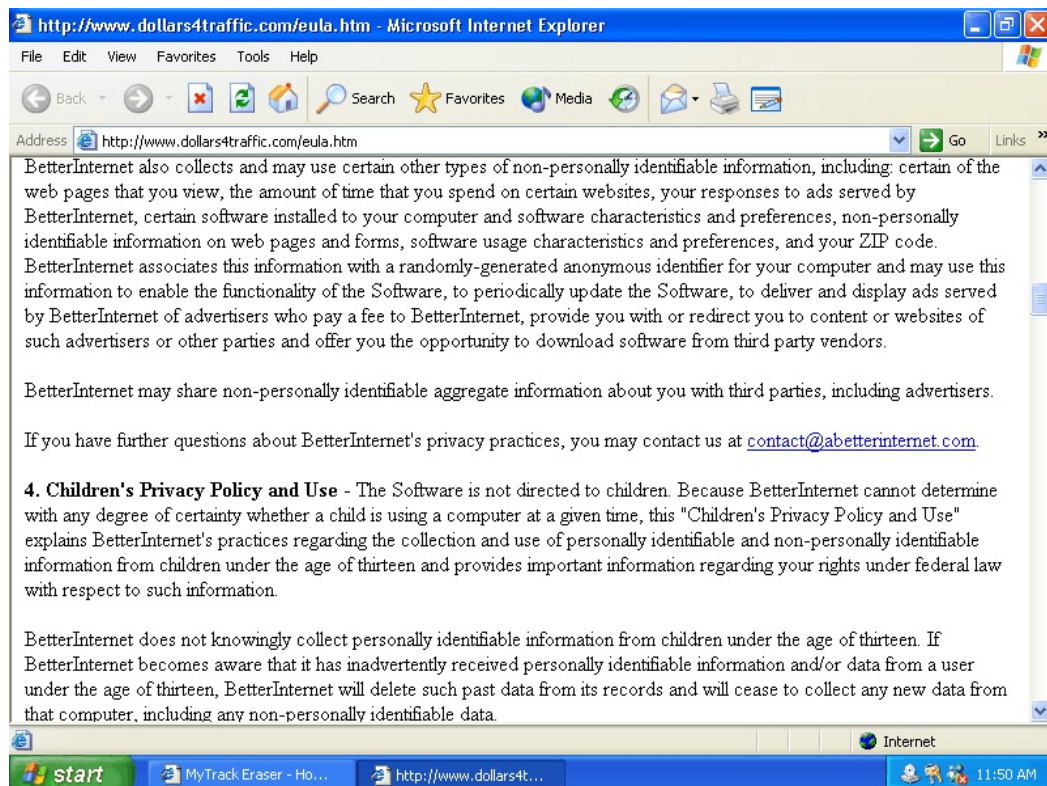
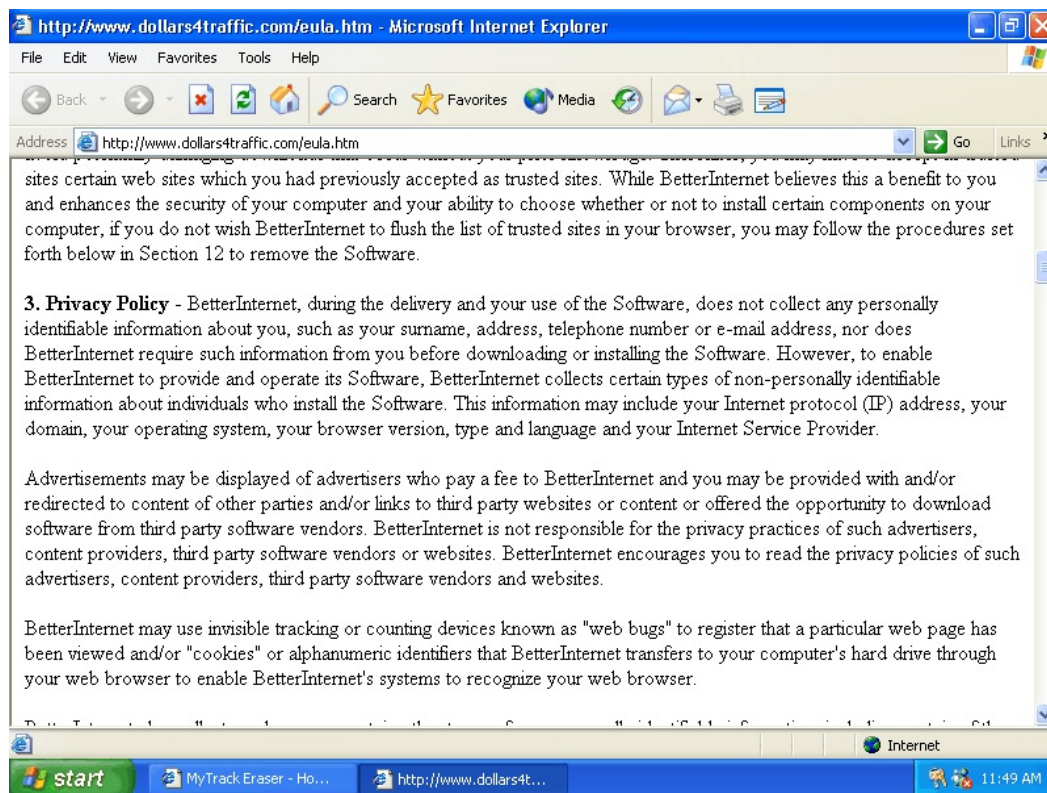


Exhibit E-5 (continued):

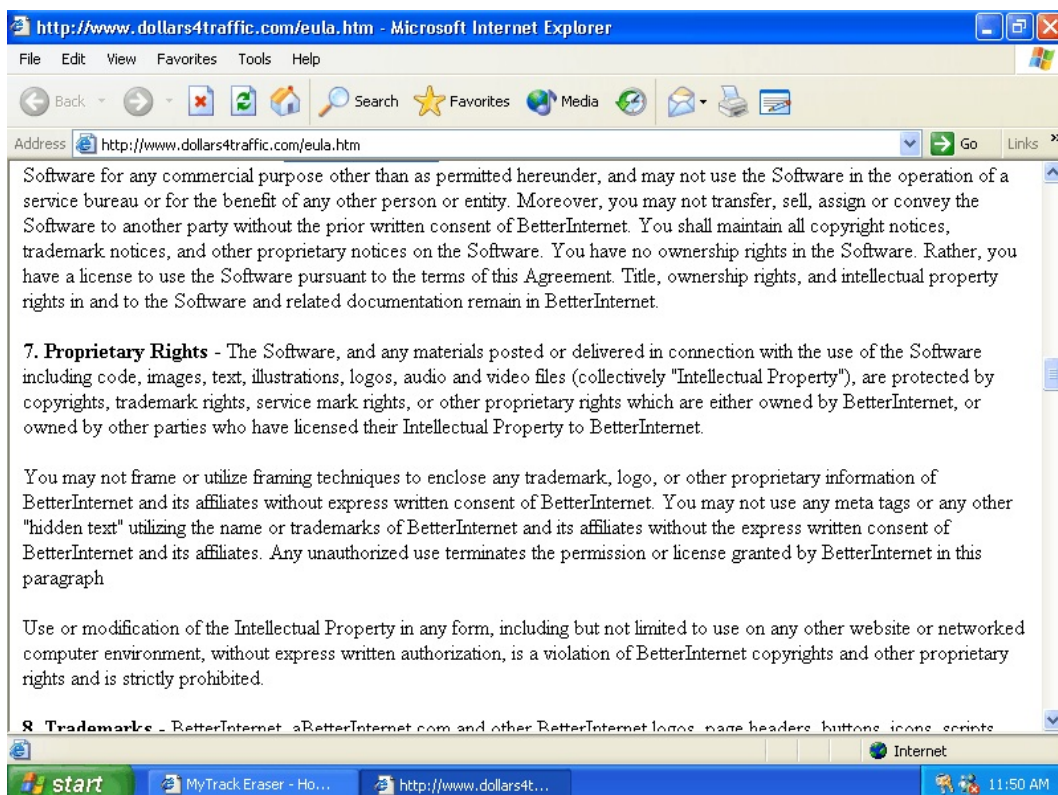
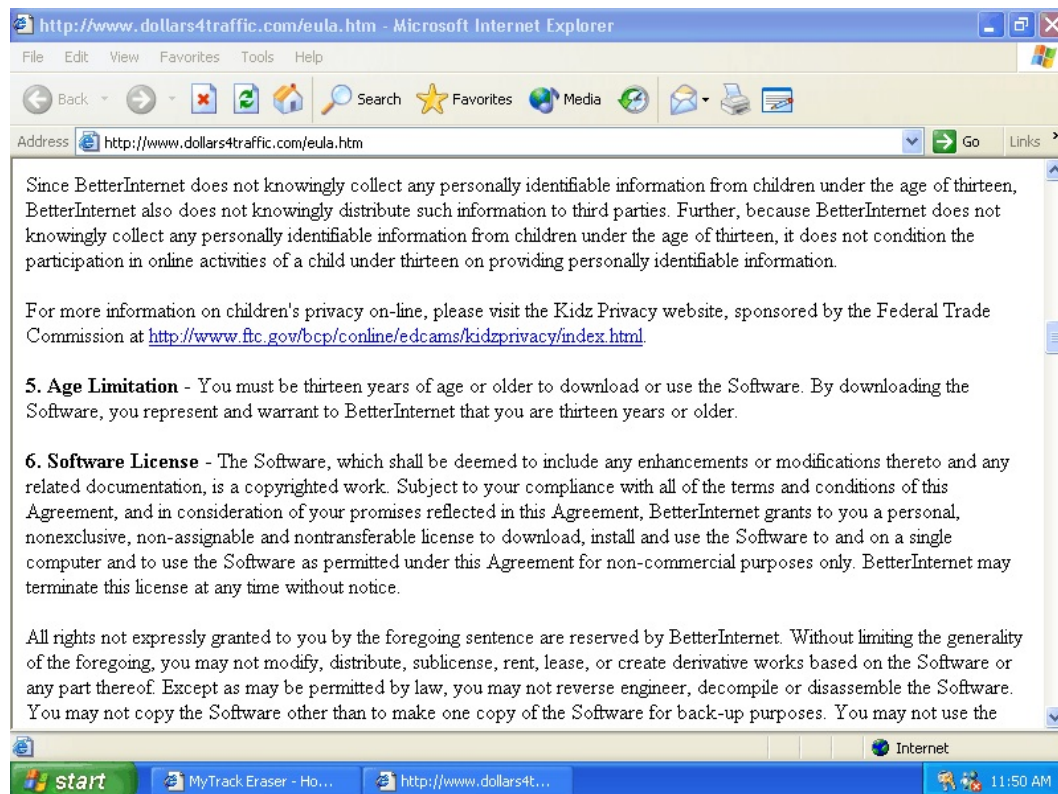


Exhibit E-5 (continued):

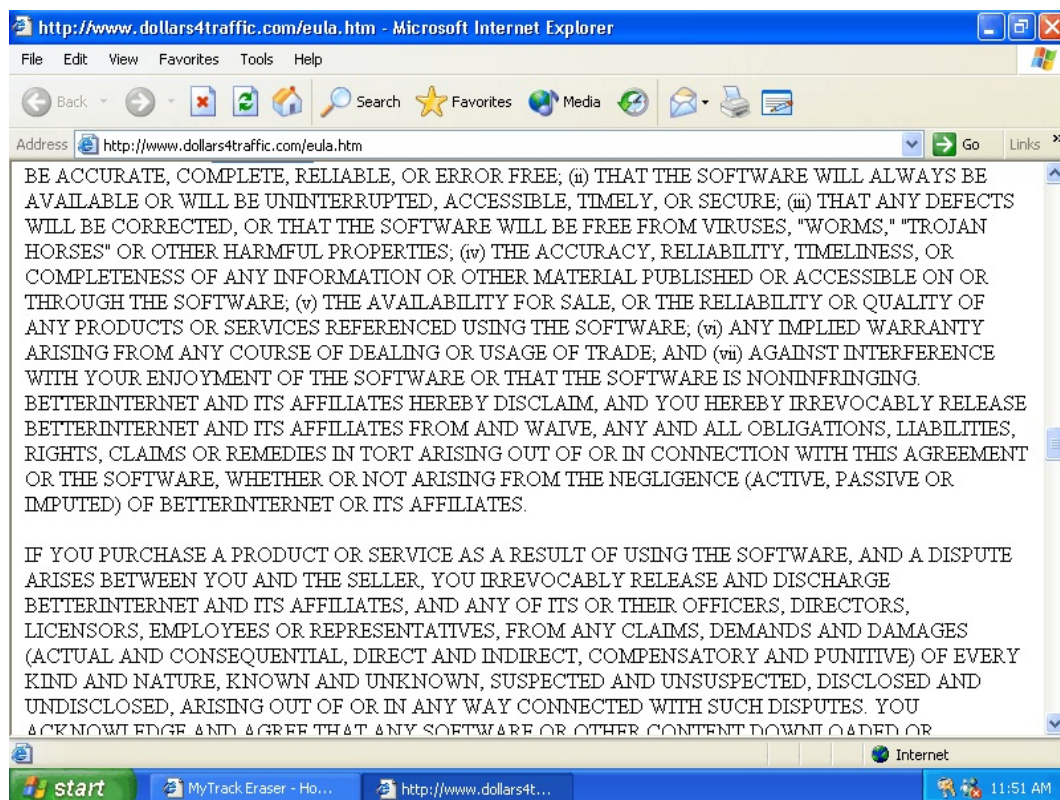
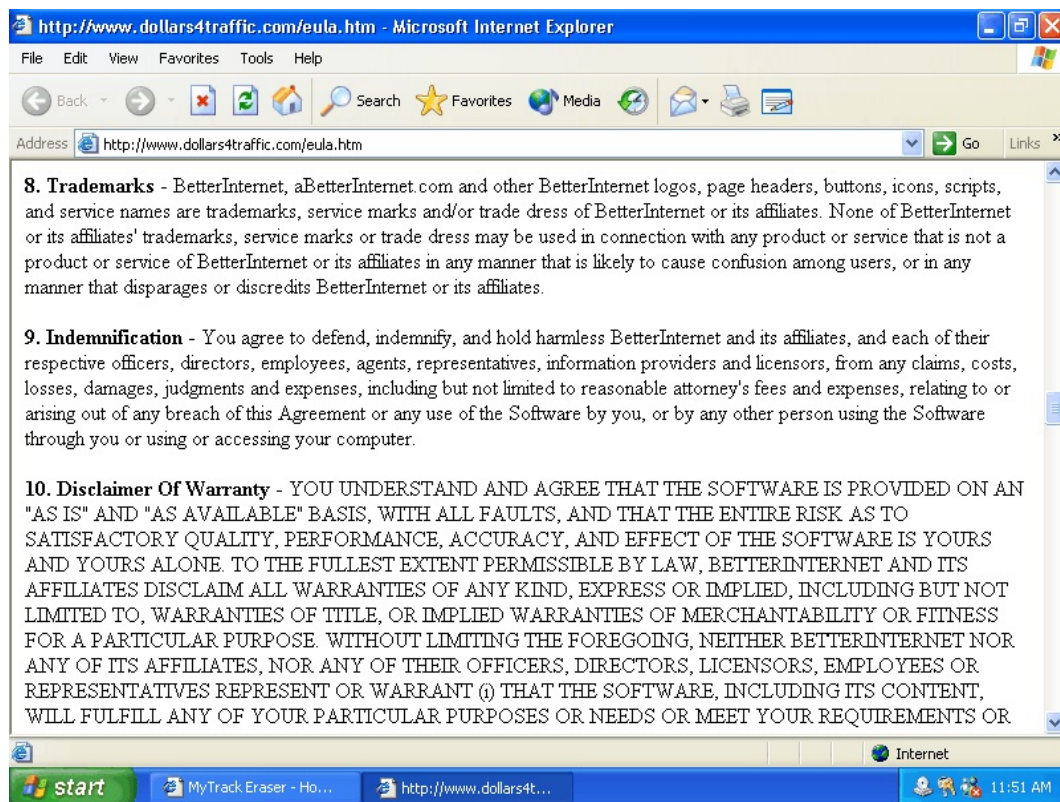


Exhibit E-5 (continued):

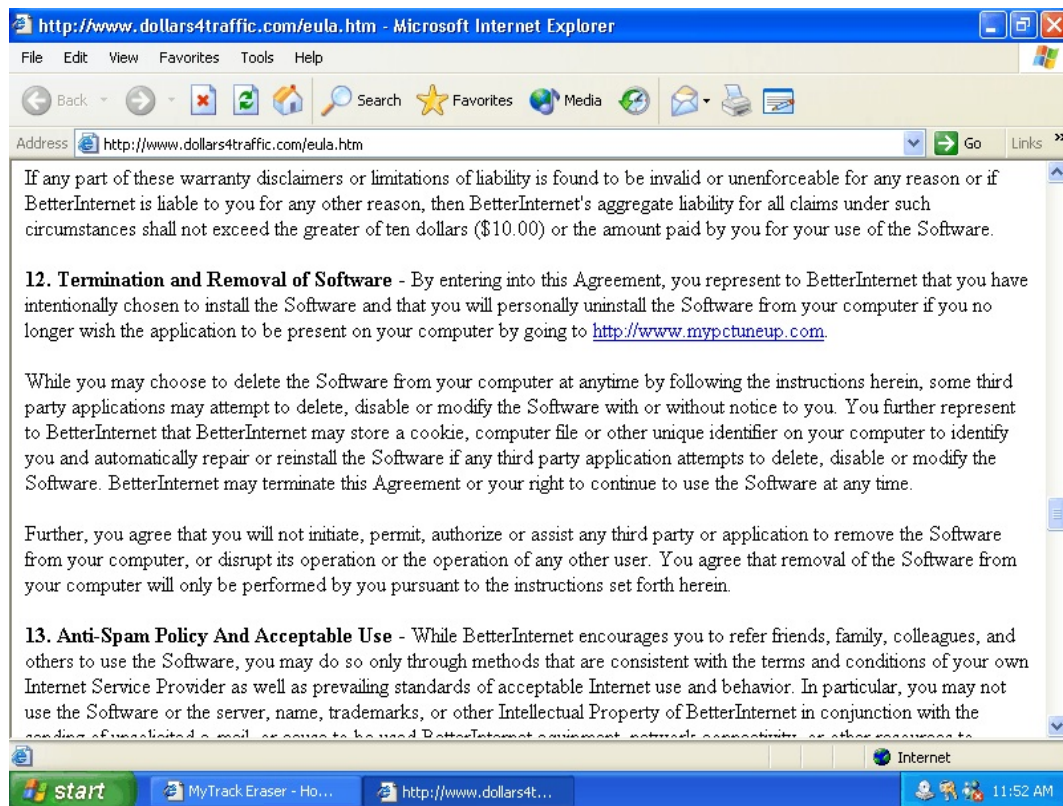
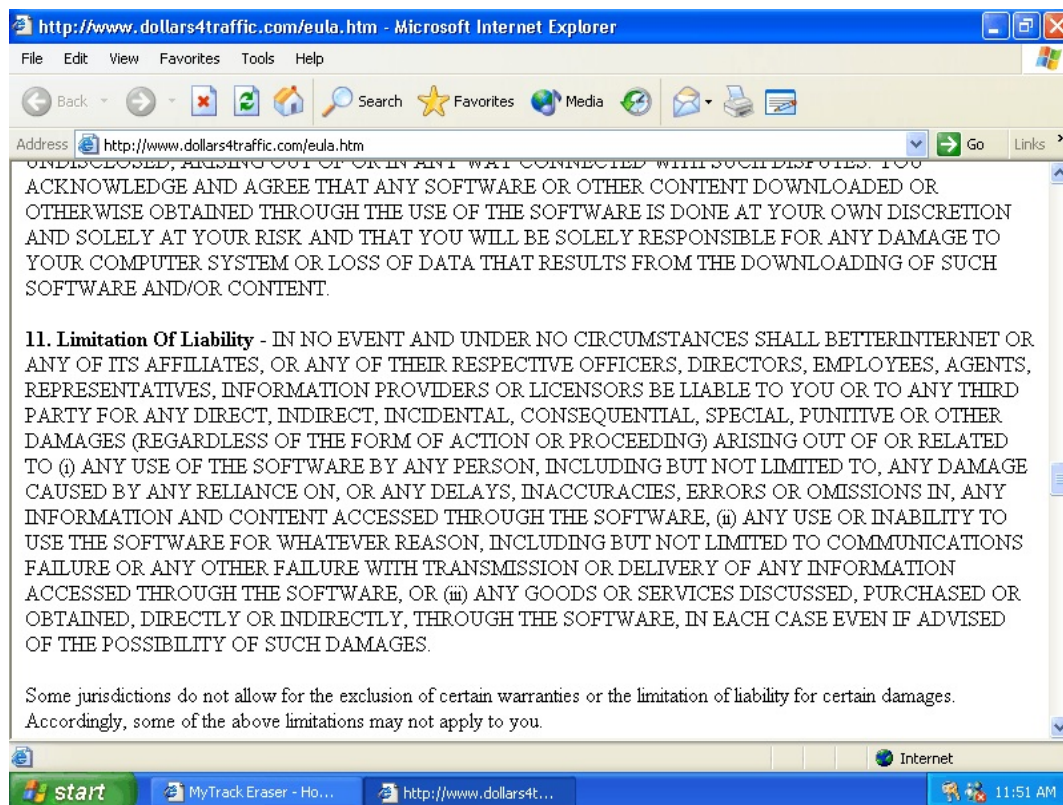


Exhibit E-5 (continued):

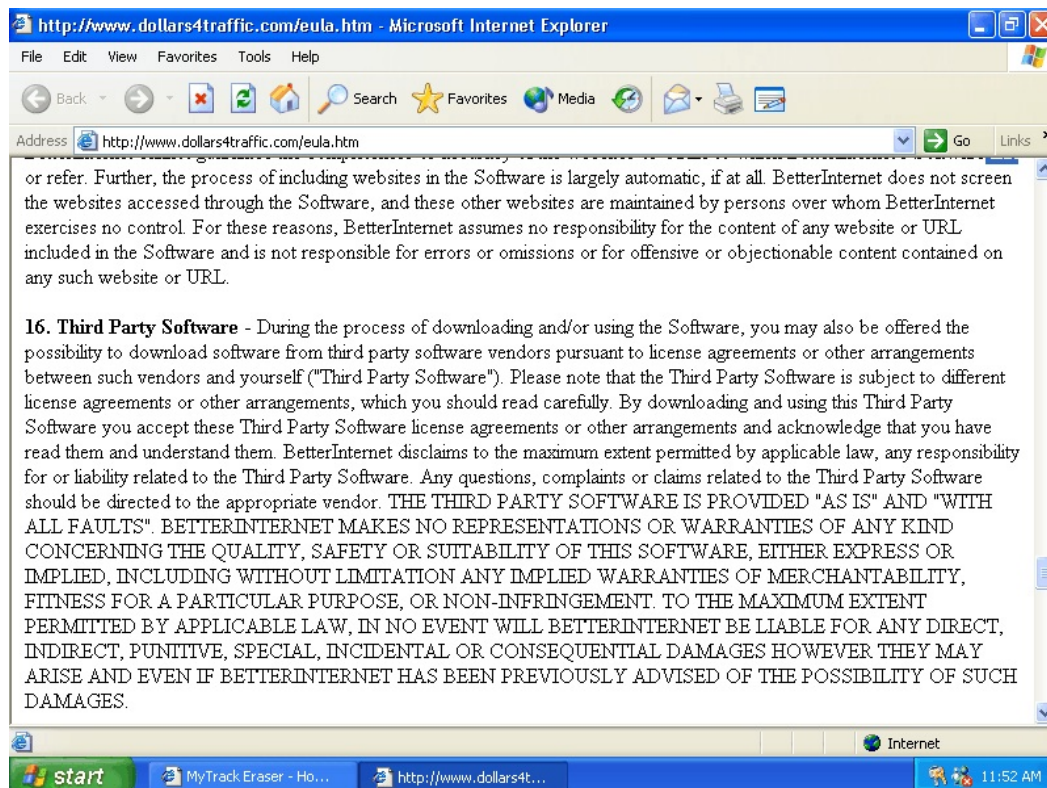
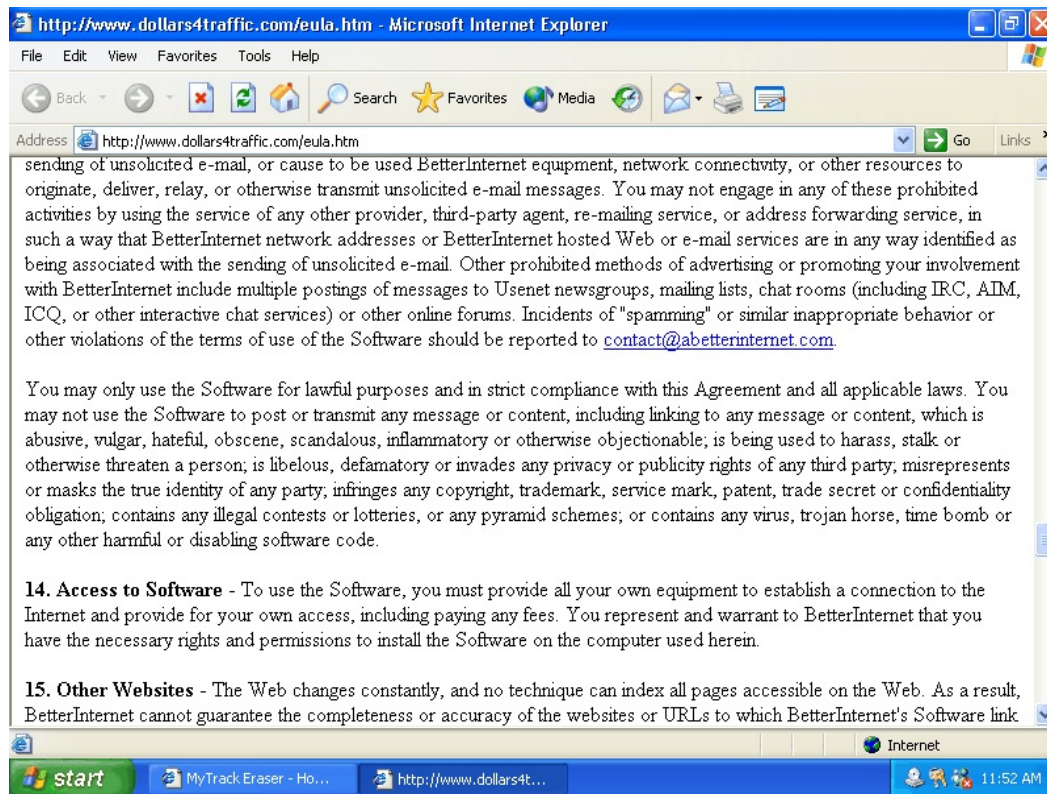


Exhibit E-5 (continued):

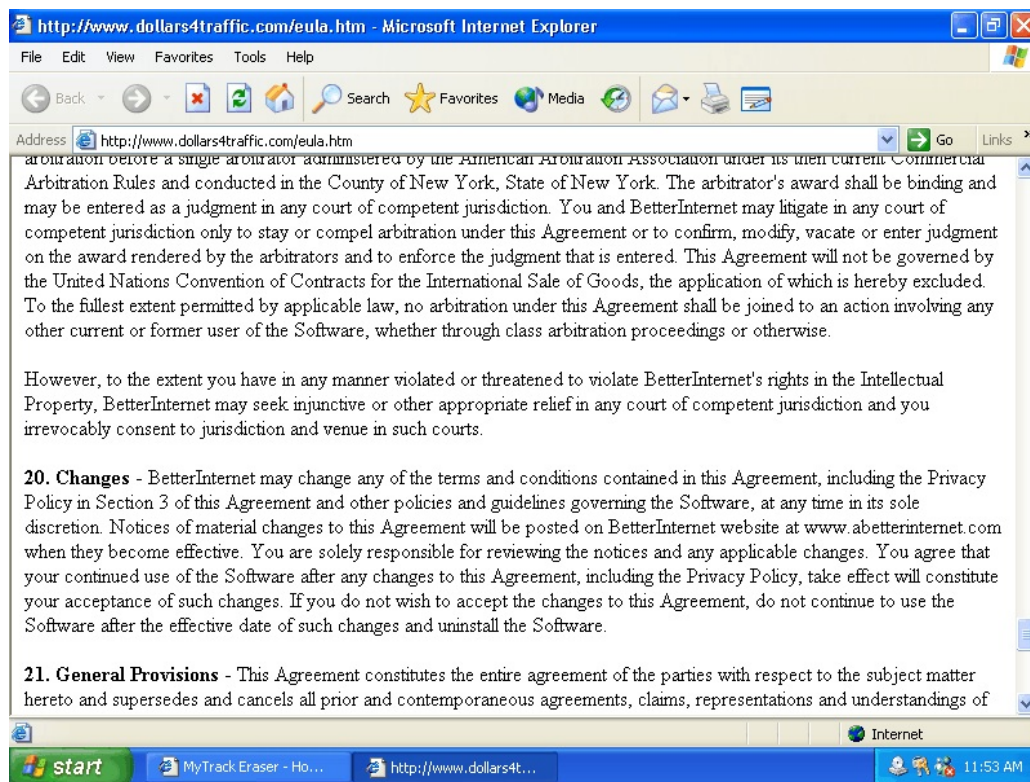
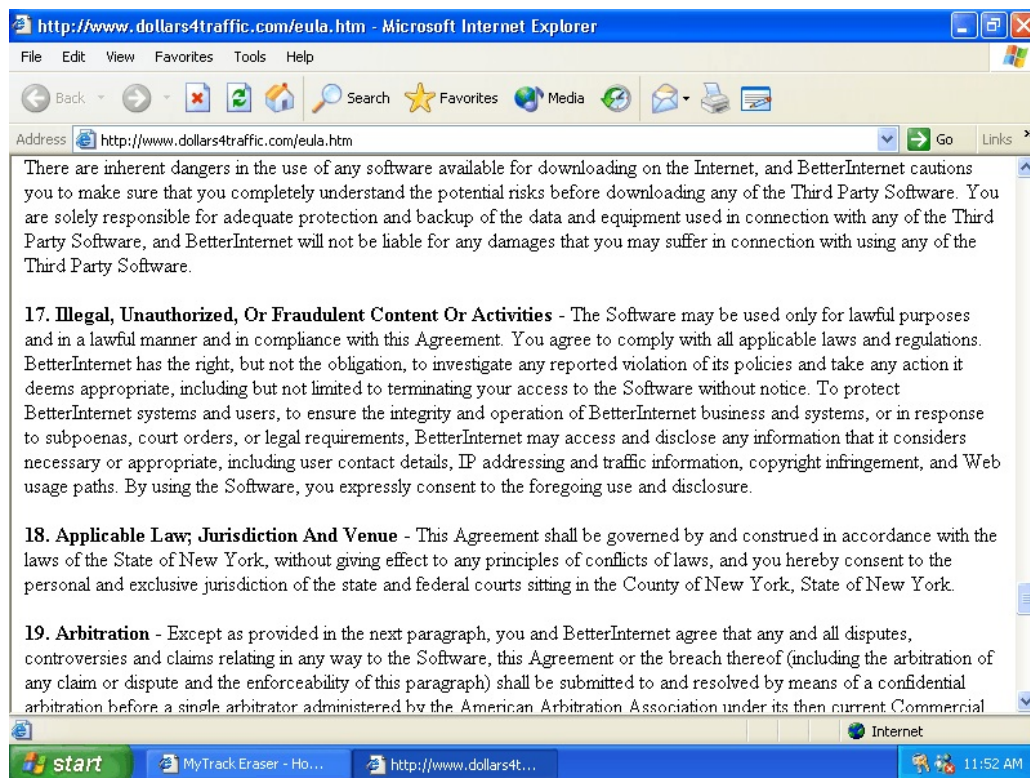


Exhibit E-5 (continued):

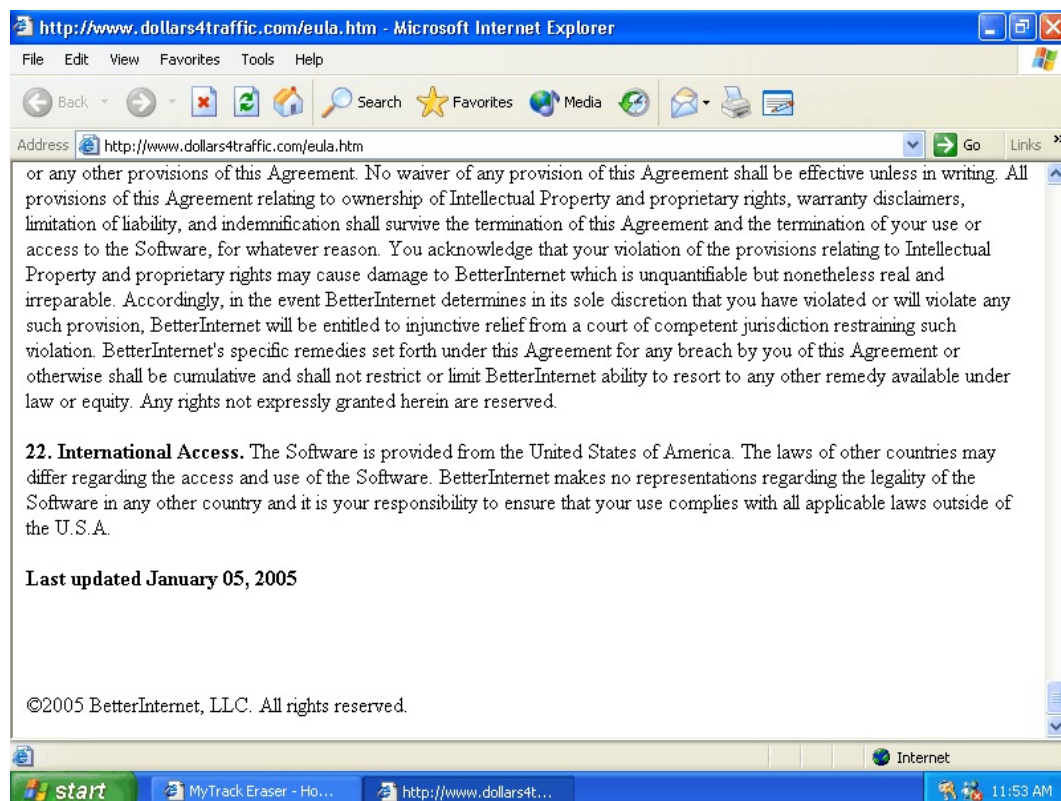
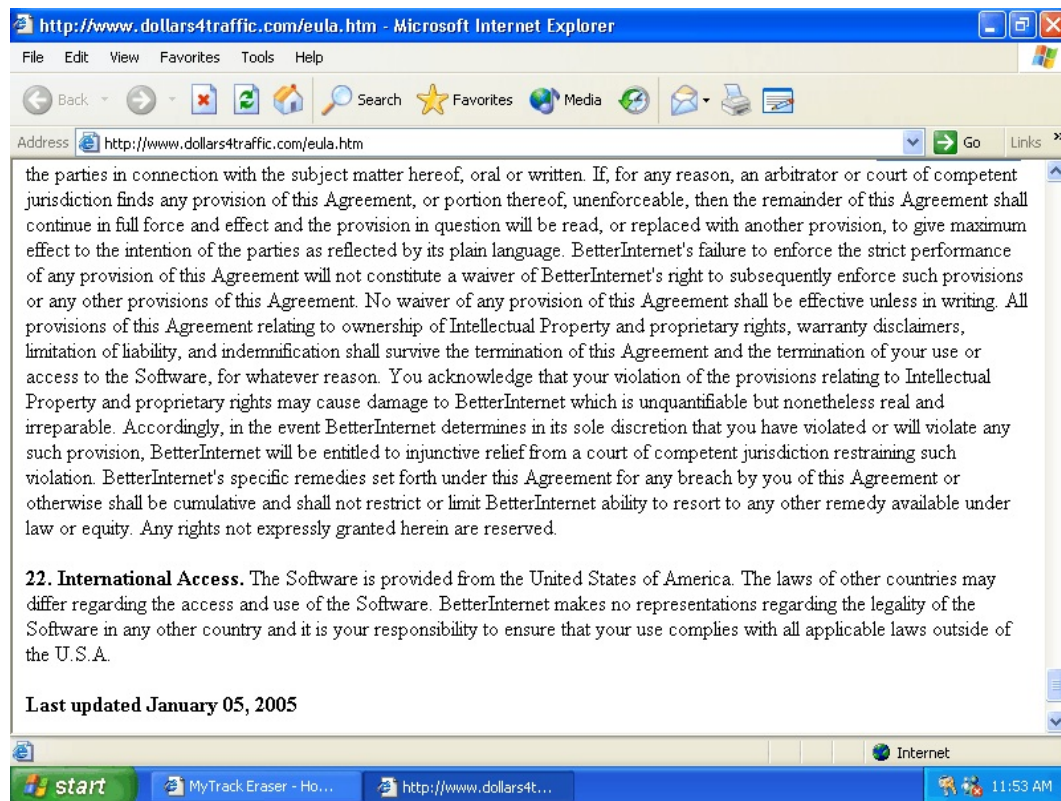


Exhibit E-6:

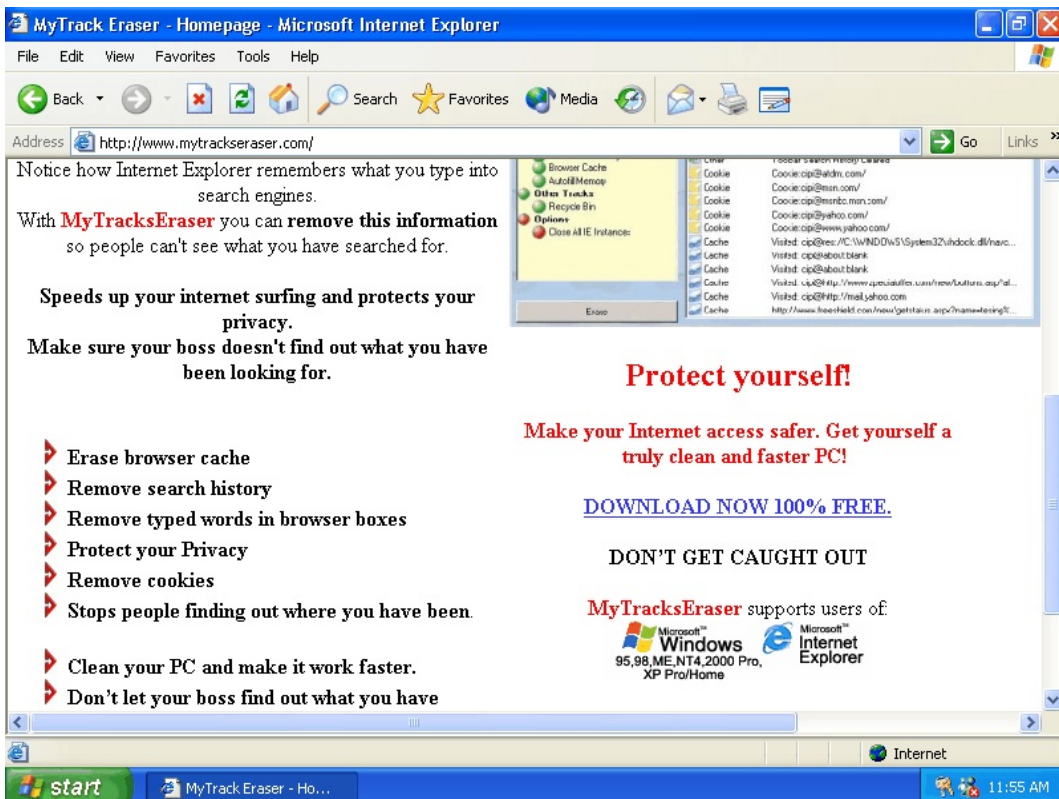
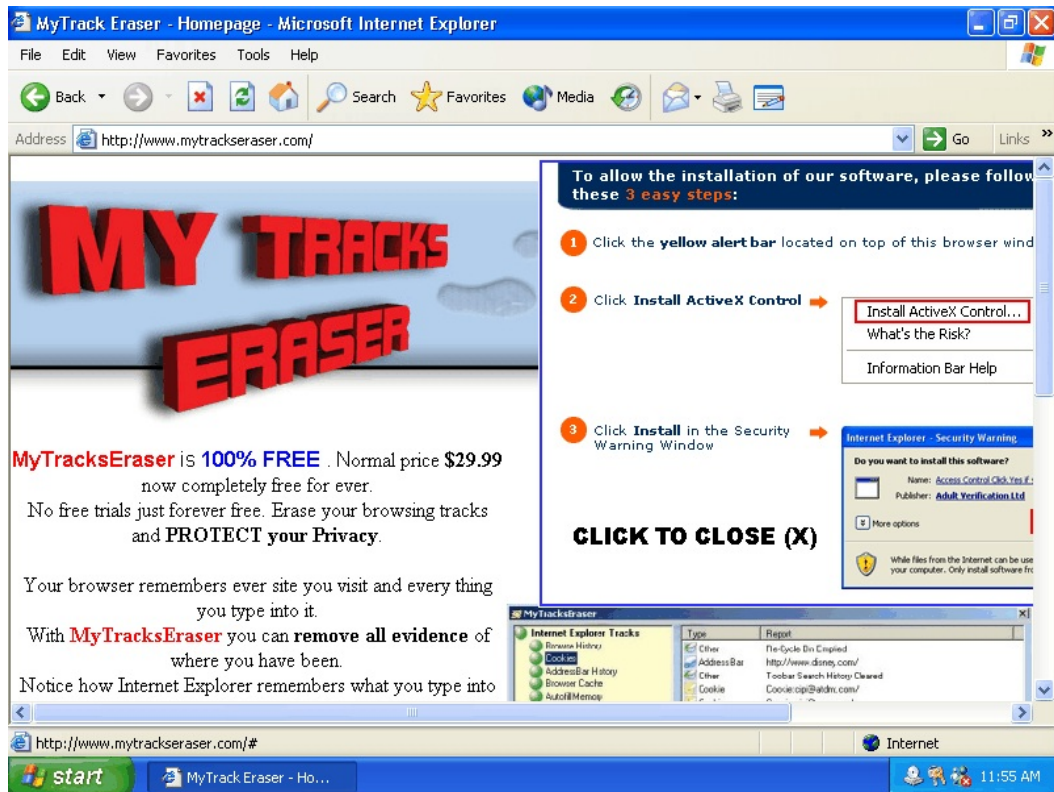


Exhibit E-6 (continued):

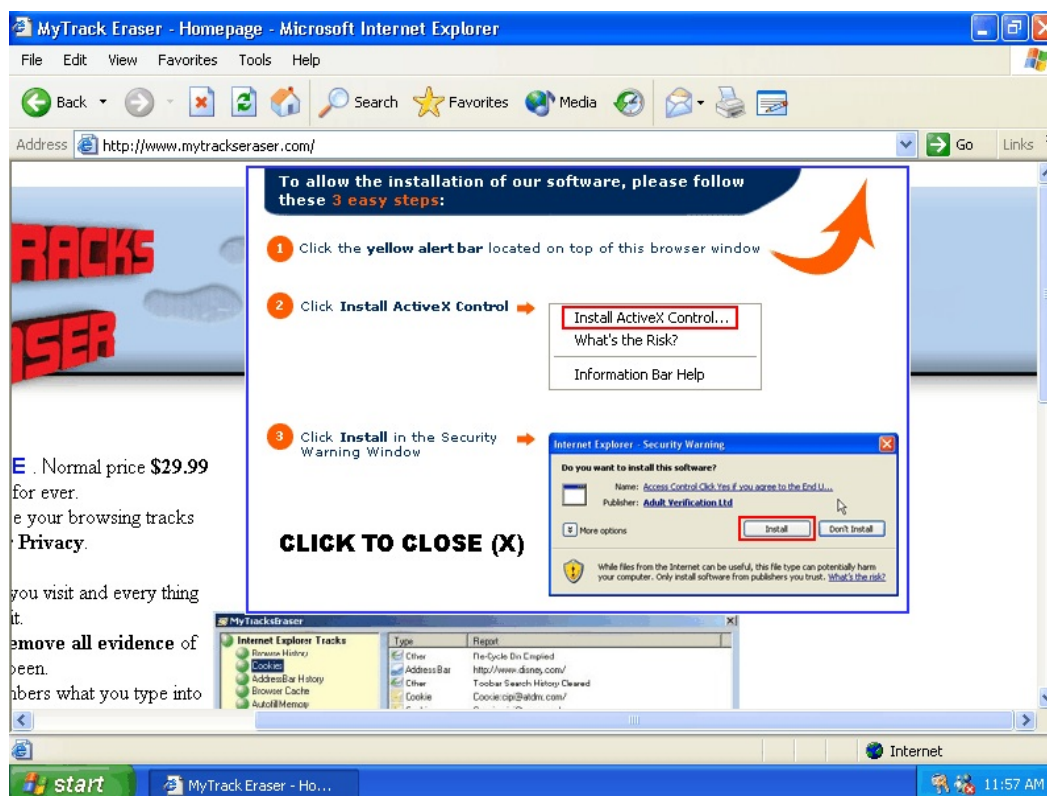
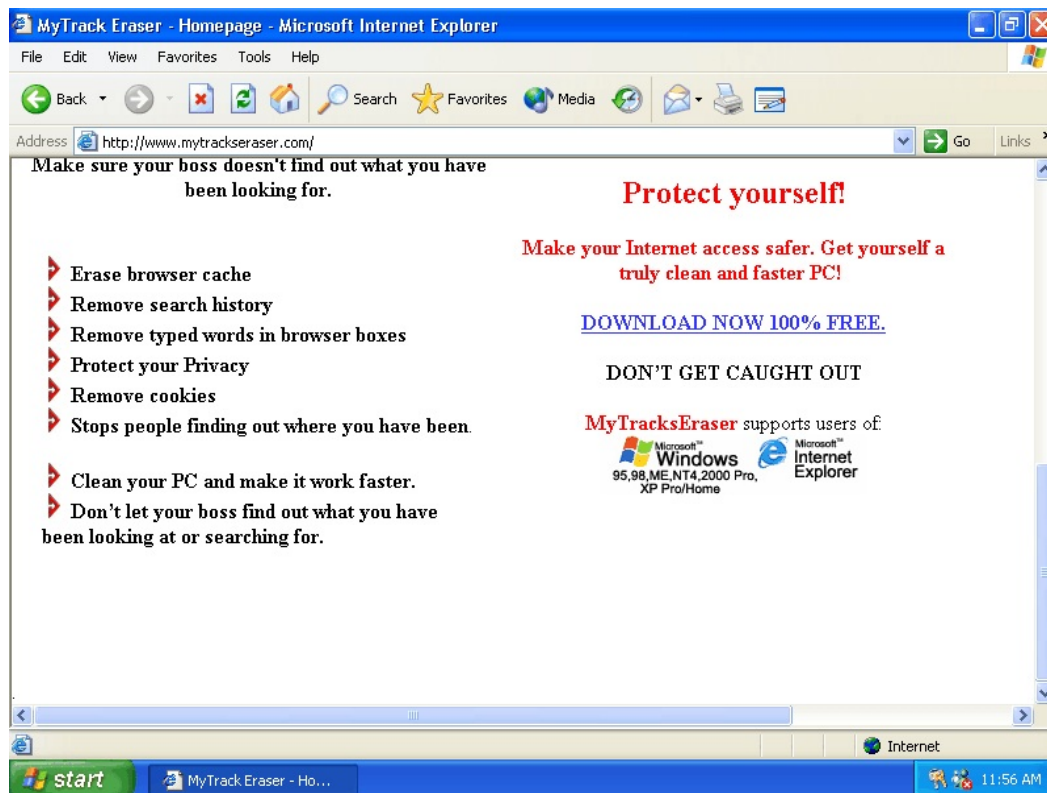


Exhibit E-6 (continued):

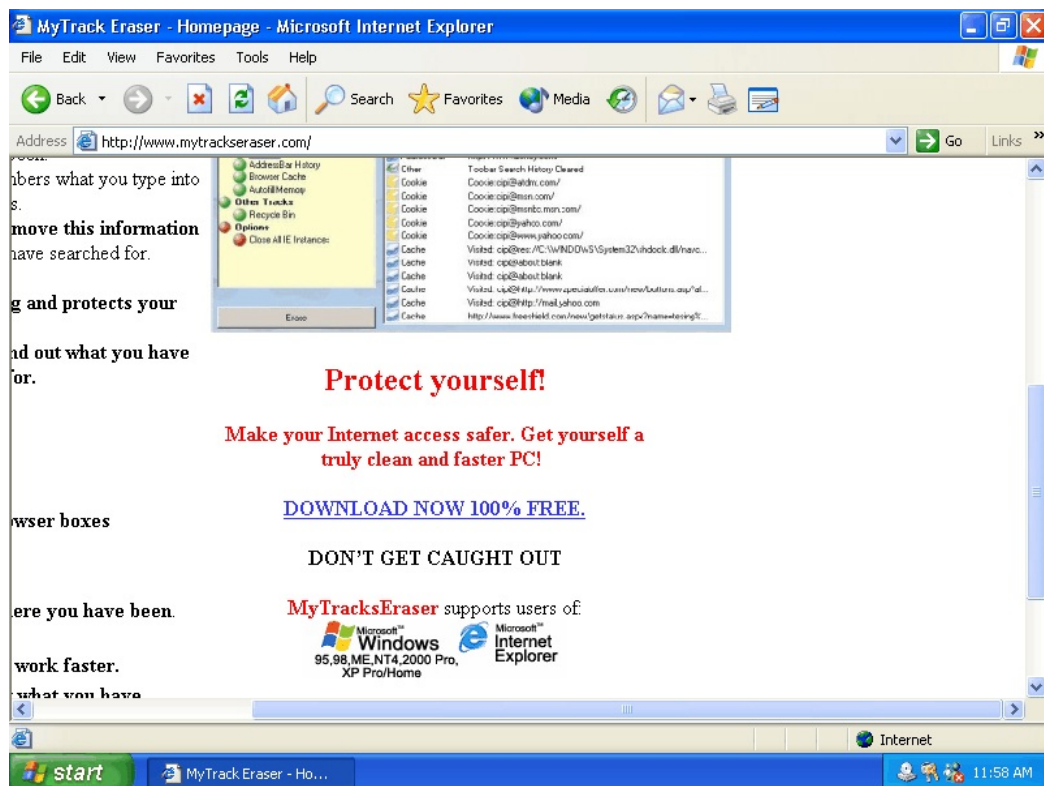


Exhibit E-7:

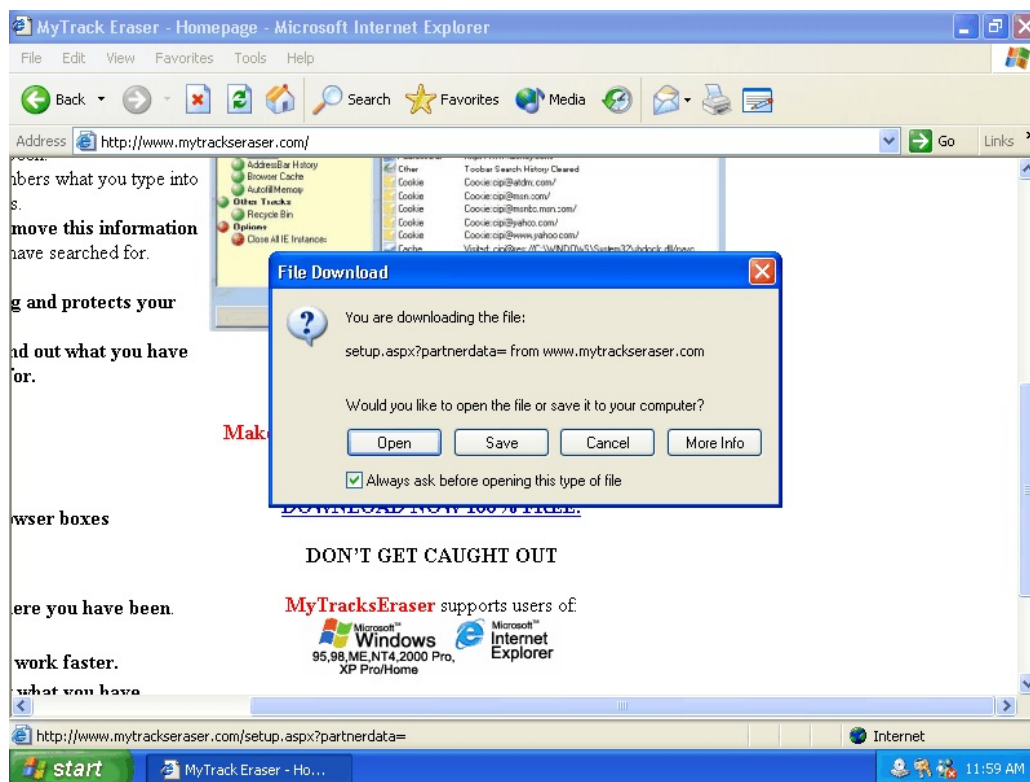


Exhibit E-8:

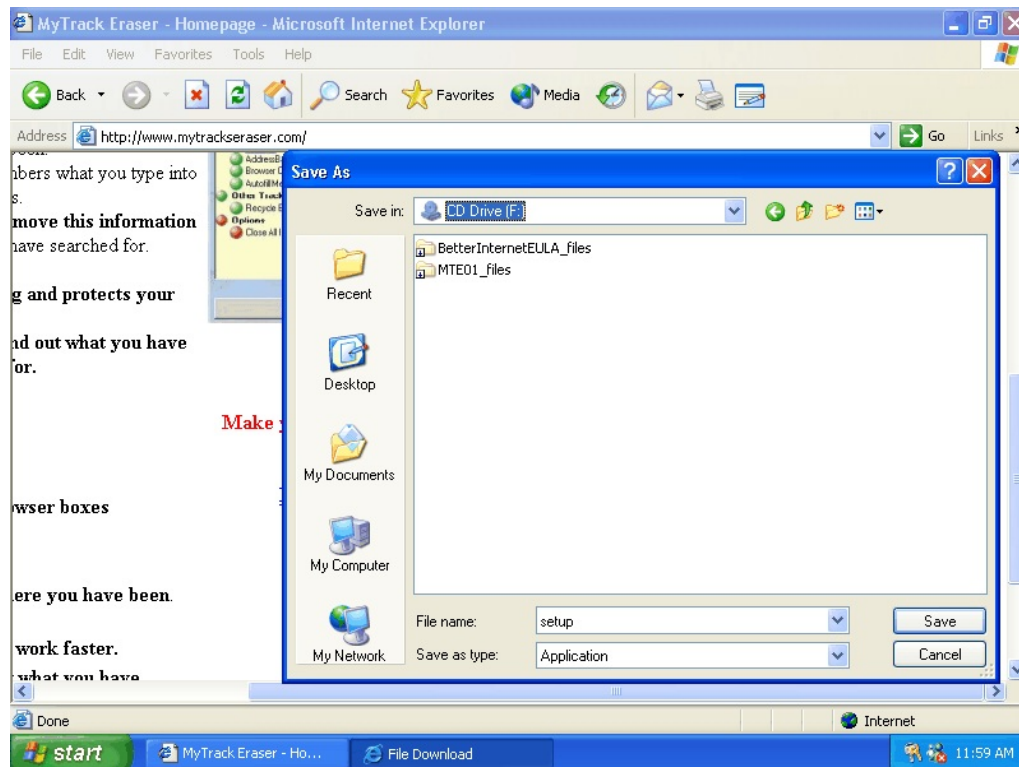


Exhibit E-9:

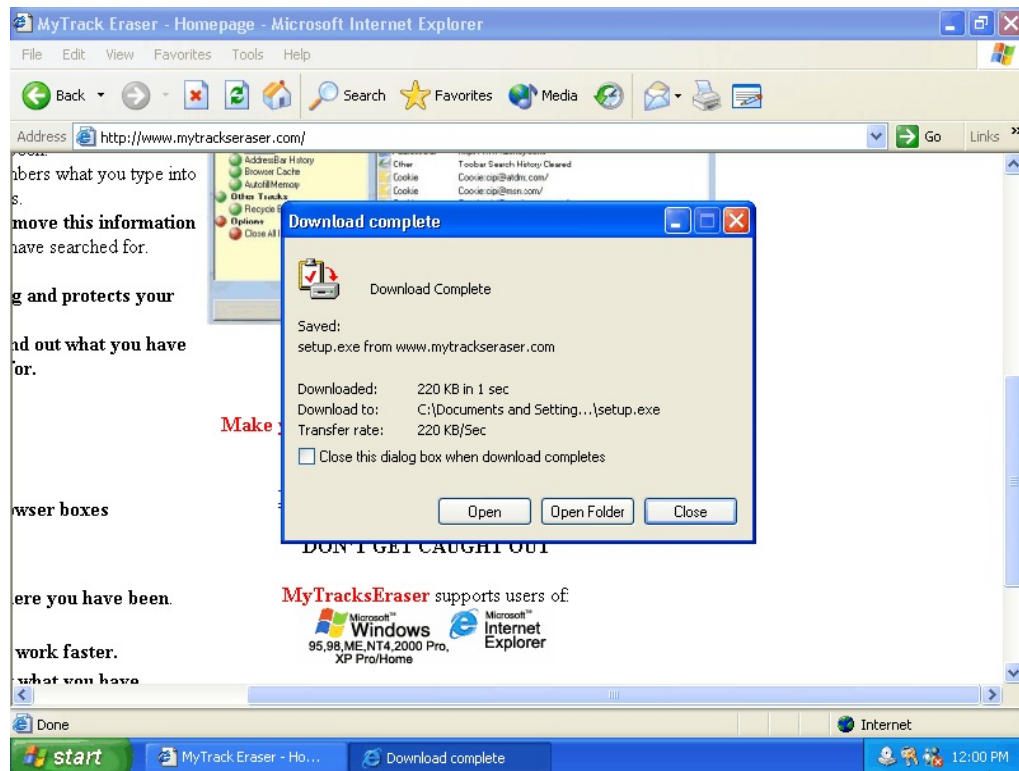


Exhibit E-10:

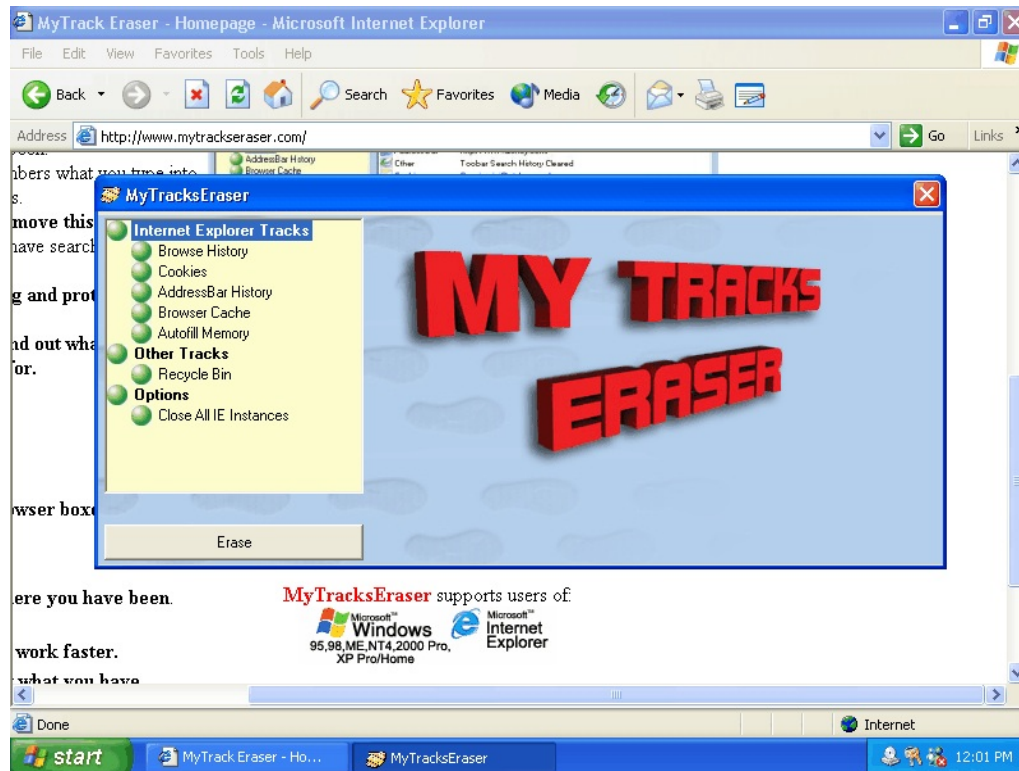


Exhibit E-11:



Exhibit E-11 (continued):



Ad-Aware SE Personal
Copyright 1999 - 2005 Lavasoft Sweden. All rights reserved.

Scanning Results

Obj.	Name	Type	Category	Object	Comment
<input type="checkbox"/>	Other	File	Malware	C:\WINDOWS\prefetch\WUP...	
<input type="checkbox"/>	Possible ...	RegData	Vulnerability	HKEY_LOCAL_MACHINES...	Possible Browser Hi...
<input type="checkbox"/>	Possible ...	RegData	Vulnerability	HKEY_LOCAL_MACHINES...	Possible Browser Hi...
<input type="checkbox"/>	Possible ...	RegData	Vulnerability	HKEY_LOCAL_MACHINES...	Possible Browser Hi...
<input type="checkbox"/>	Possible ...	RegData	Vulnerability	HKEY_LOCAL_MACHINES...	Possible Browser Hi...
<input type="checkbox"/>	Possible ...	RegData	Vulnerability	HKEY_USERS:S-1-5-21-43...	Possible Browser Hi...
<input type="checkbox"/>	Possible ...	RegData	Vulnerability	HKEY_USERS:S-1-5-21-43...	Possible Browser Hi...
<input type="checkbox"/>	Possible ...	RegData	Vulnerability	HKEY_USERS:S-1-5-21-43...	Possible Browser Hi...
<input type="checkbox"/>	Possible ...	Regkey	Vulnerability	HKEY_LOCAL_MACHINES...	(http://www.abetteri...
<input type="checkbox"/>	Possible ...	RegValue	Vulnerability	HKEY_LOCAL_MACHINES...	(http://www.abetteri...
<input type="checkbox"/>	Possible ...	RegValue	Vulnerability	HKEY_LOCAL_MACHINES...	(http://www.abetteri...
<input type="checkbox"/>	Possible ...	RegValue	Vulnerability	HKEY_LOCAL_MACHINES...	(http://www.abetteri...
<input type="checkbox"/>	Possible ...	RegValue	Vulnerability	HKEY_LOCAL_MACHINES...	(http://www.abetteri...
<input type="checkbox"/>	Possible ...	RegValue	Vulnerability	HKEY_LOCAL_MACHINES...	(http://www.abetteri...
<input type="checkbox"/>	Roings	RegValue	Malware	HKEY_USERS:S-1-5-21-43...	"Date"
<input type="checkbox"/>	VX2	Process	Malware	C:\WINDOWS\system32\DrP...	
<input type="checkbox"/>	VX2	Regkey	Malware	HKEY_USERS:S-1-5-21-43...	
<input type="checkbox"/>	VX2	RegValue	Malware	HKEY_USERS:S-1-5-21-43...	

87/94 Objects

Quarantine Show Logfile Next

Ad-Aware SE Personal

Ad-Aware se

Copyright 1999 - 2005 Lavasoft Sweden. All rights reserved.

Status

Scan now

Ad-Watch

Add-ons

Help

Scanning Results

Scan Summary Critical Objects Negligible Objects Scan Log

Obj.	Name	Type	Category	Object	Comment
<input type="checkbox"/>	VX2	RegValue	Malware	HKEY_USERS:S-1-5-21-43...	
<input type="checkbox"/>	VX2	RegValue	Malware	HKEY_USERS:S-1-5-21-43...	
<input type="checkbox"/>	VX2	RegValue	Malware	HKEY_USERS:S-1-5-21-43...	
<input type="checkbox"/>	VX2	RegValue	Malware	HKEY_USERS:S-1-5-21-43...	
<input type="checkbox"/>	VX2	RegValue	Malware	HKEY_USERS:S-1-5-21-43...	
<input type="checkbox"/>	VX2	RegValue	Malware	HKEY_USERS:S-1-5-21-43...	
<input type="checkbox"/>	VX2	RegValue	Malware	HKEY_USERS:S-1-5-21-43...	
<input type="checkbox"/>	VX2	RegValue	Malware	HKEY_USERS:S-1-5-21-43...	
<input type="checkbox"/>	VX2	RegValue	Malware	HKEY_USERS:S-1-5-21-43...	
<input type="checkbox"/>	VX2	RegValue	Malware	HKEY_USERS:S-1-5-21-43...	
<input type="checkbox"/>	VX2	RegValue	Malware	HKEY_USERS:S-1-5-21-43...	
<input type="checkbox"/>	VX2	RegValue	Malware	HKEY_USERS:S-1-5-21-43...	
<input type="checkbox"/>	VX2	RegValue	Malware	HKEY_USERS:S-1-5-21-43...	
<input type="checkbox"/>	VX2	RegValue	Malware	HKEY_USERS:S-1-5-21-43...	
<input type="checkbox"/>	VX2	RegValue	Malware	HKEY_USERS:S-1-5-21-43...	
<input type="checkbox"/>	VX2	RegValue	Malware	HKEY_USERS:S-1-5-21-43...	

Right-click an item for more options, Doubleclick to show details.

87/94 Objects

Quarantine Show Logfile Next

LAVASOFT

Ad-Aware SE Personal, Build 1.06r1

start Ad-Aware SE MSN.com - Microsoft ... Aurora - part of the ... 1:04 PM

Exhibit E-11 (continued):

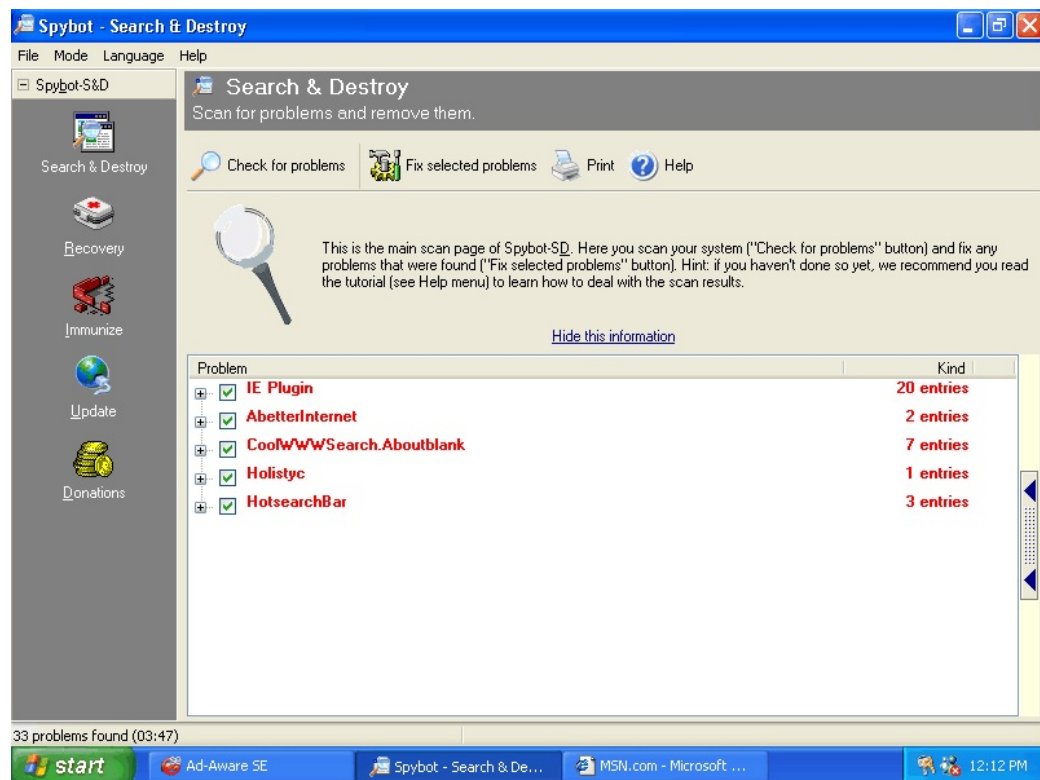
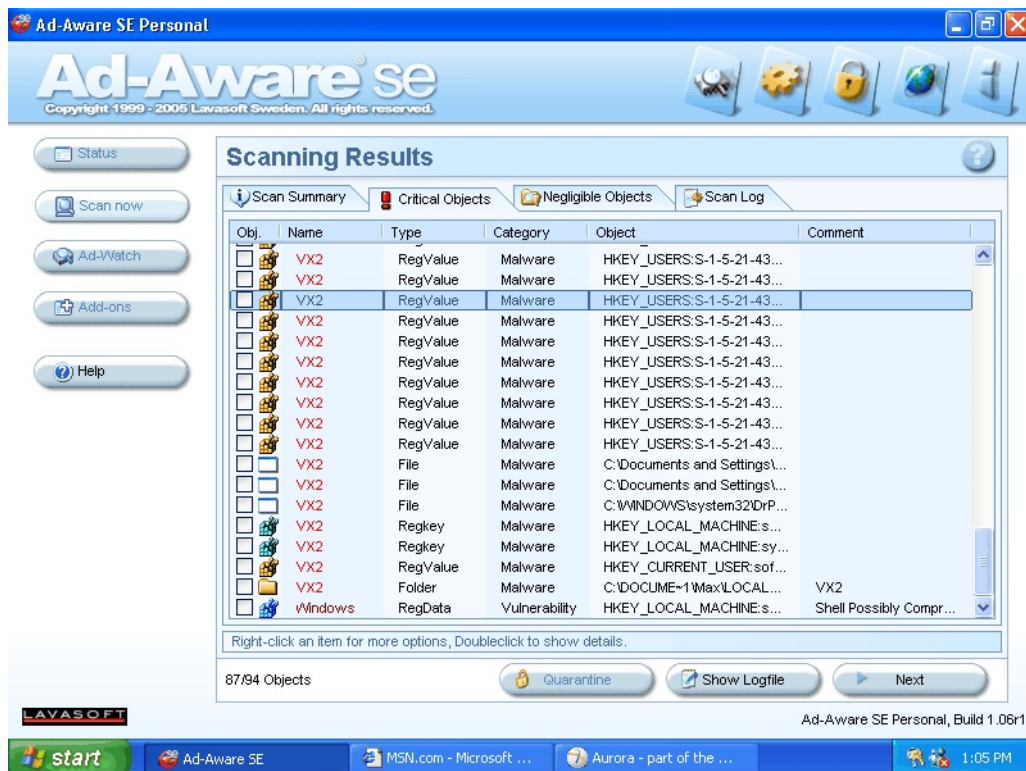


Exhibit E-11 (continued):

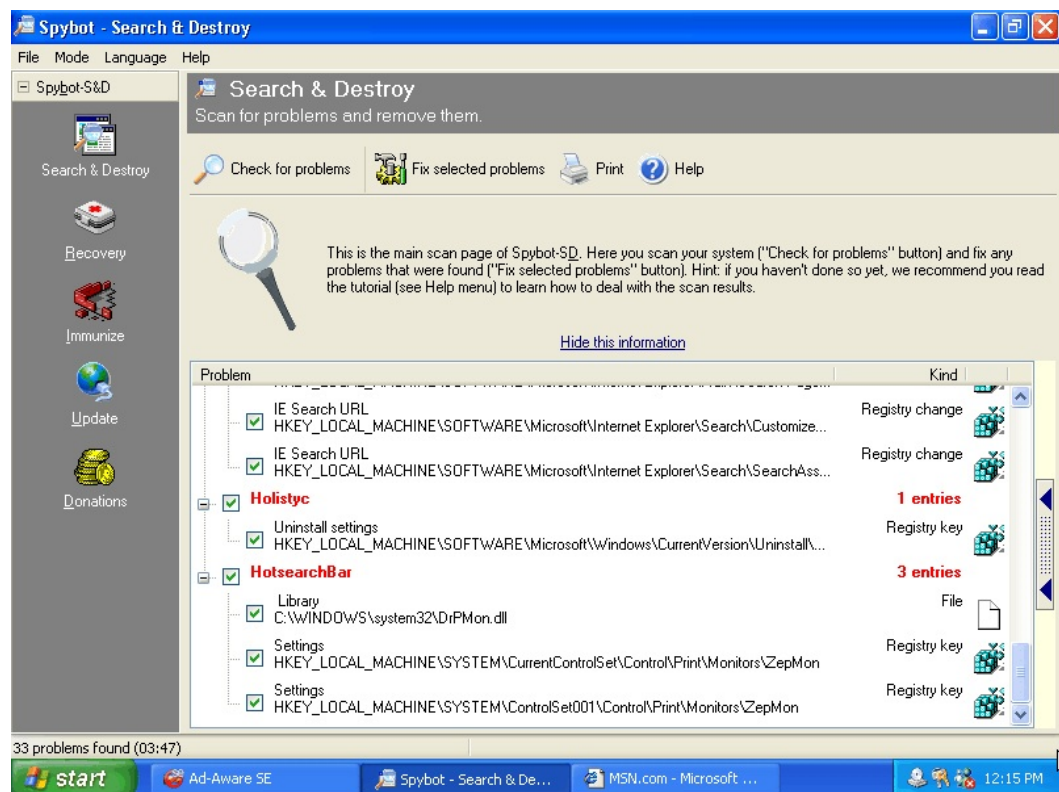
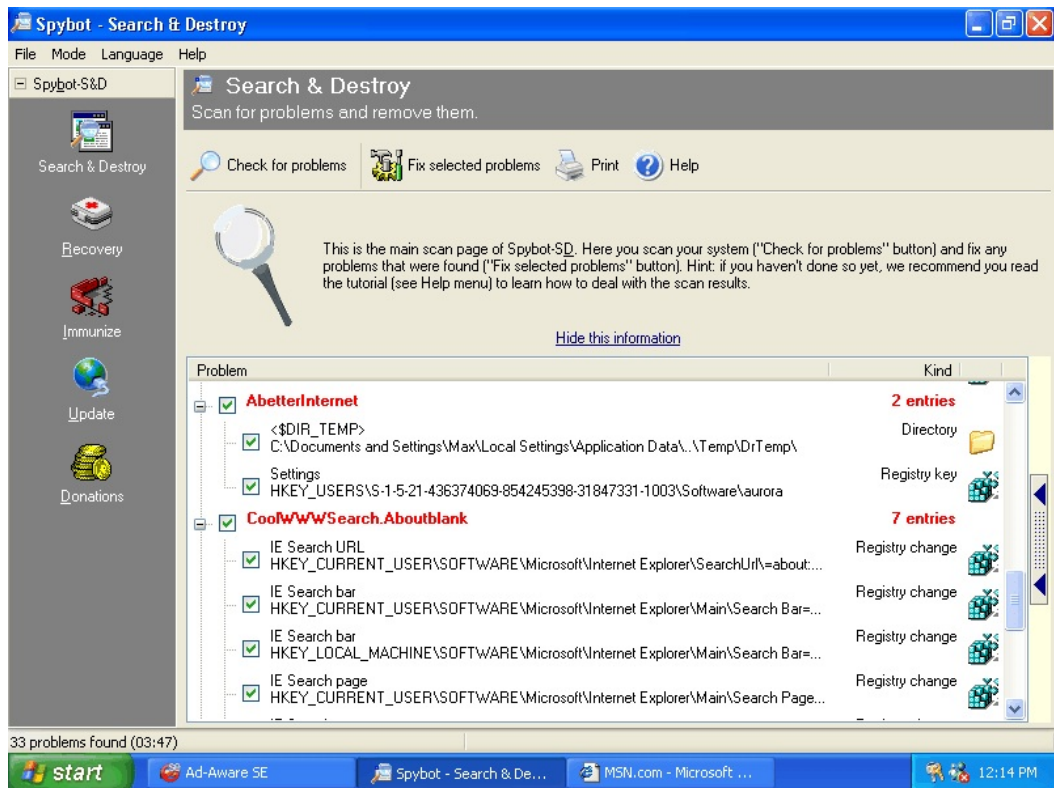


Exhibit E-12:

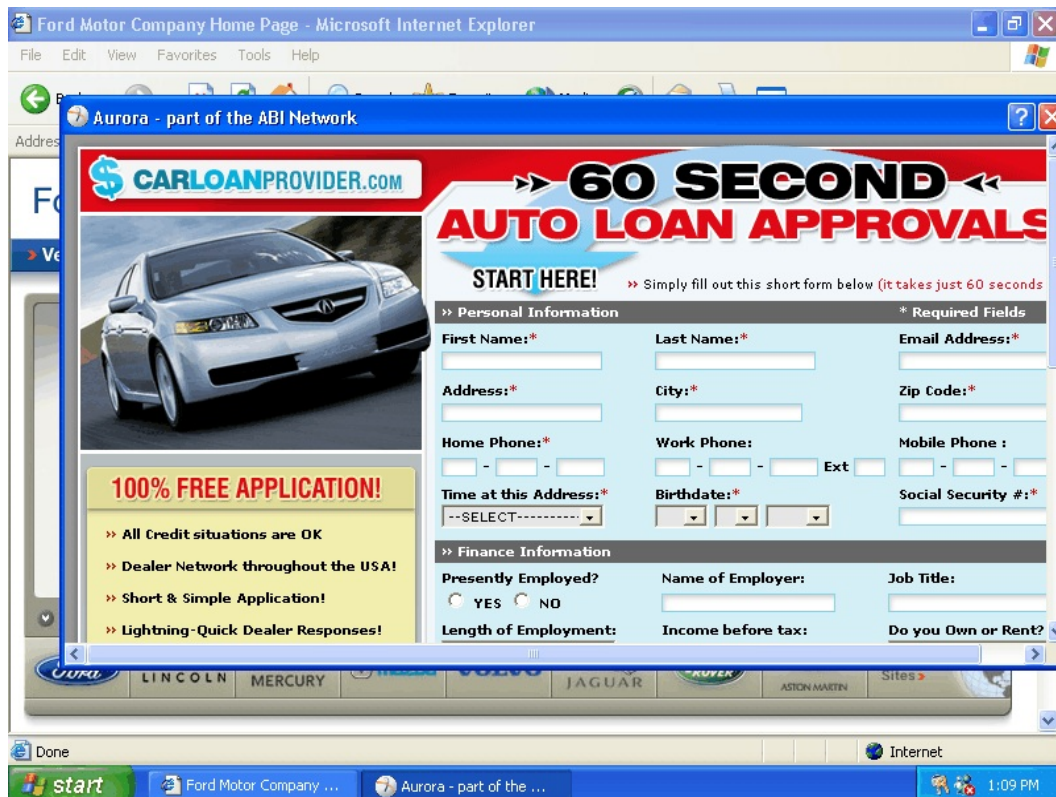
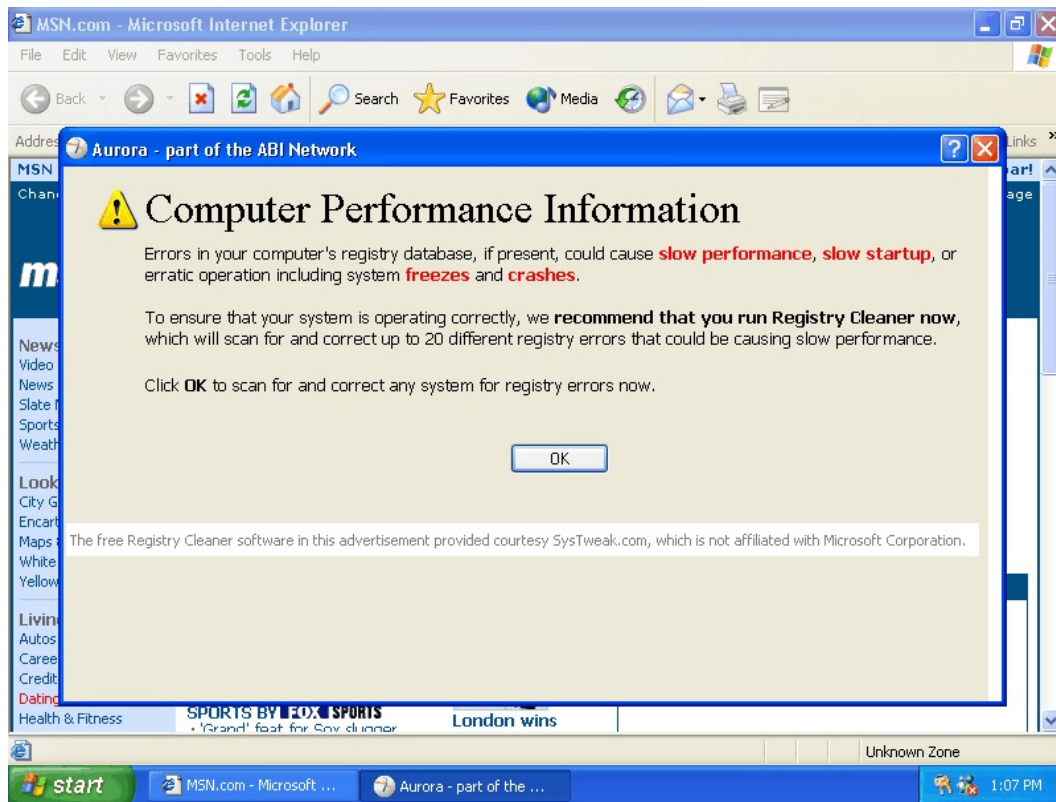


Exhibit E-12 (continued):

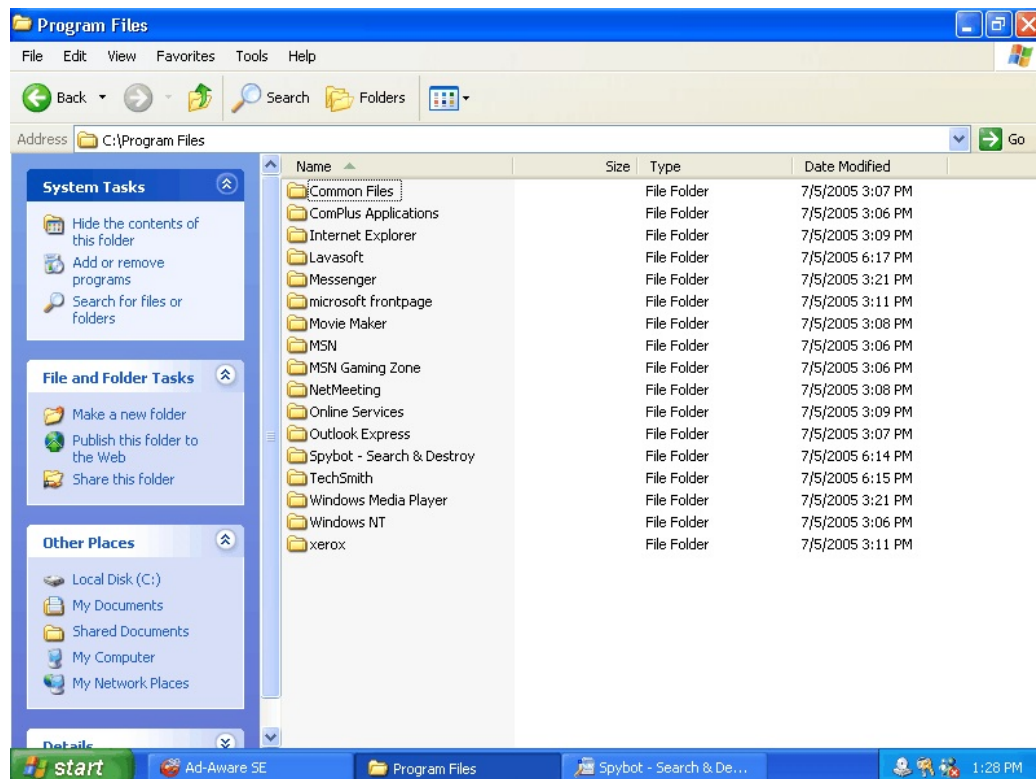
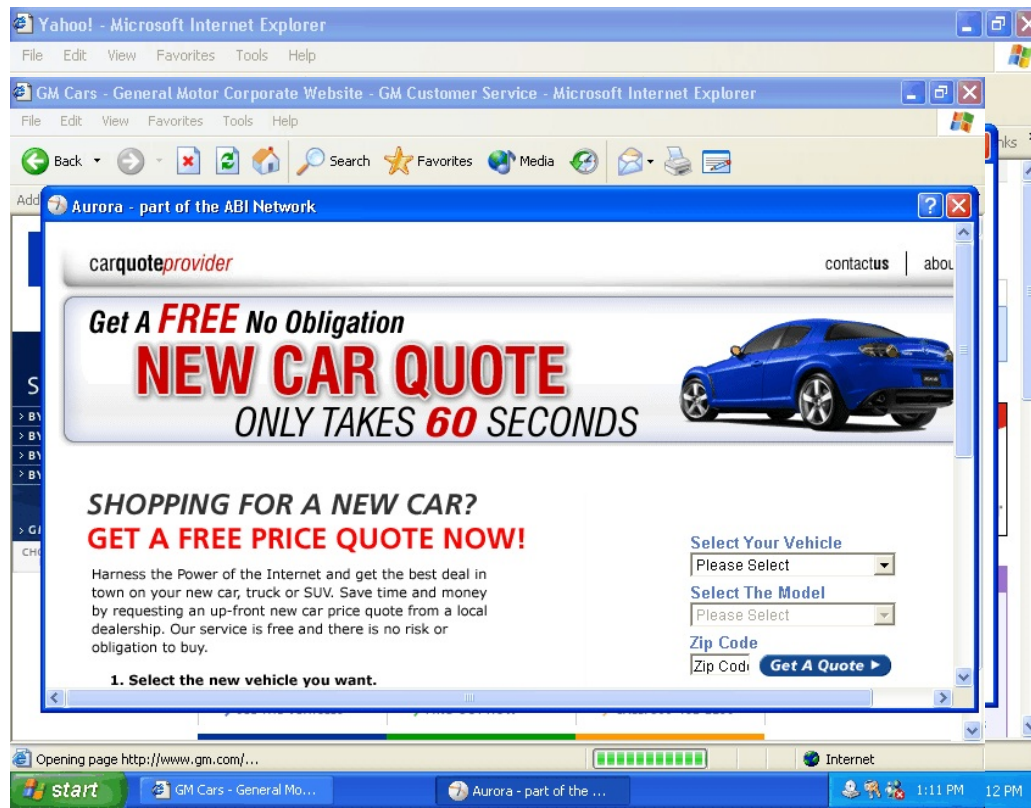


Exhibit E-12 (continued):



Exhibit E-13:

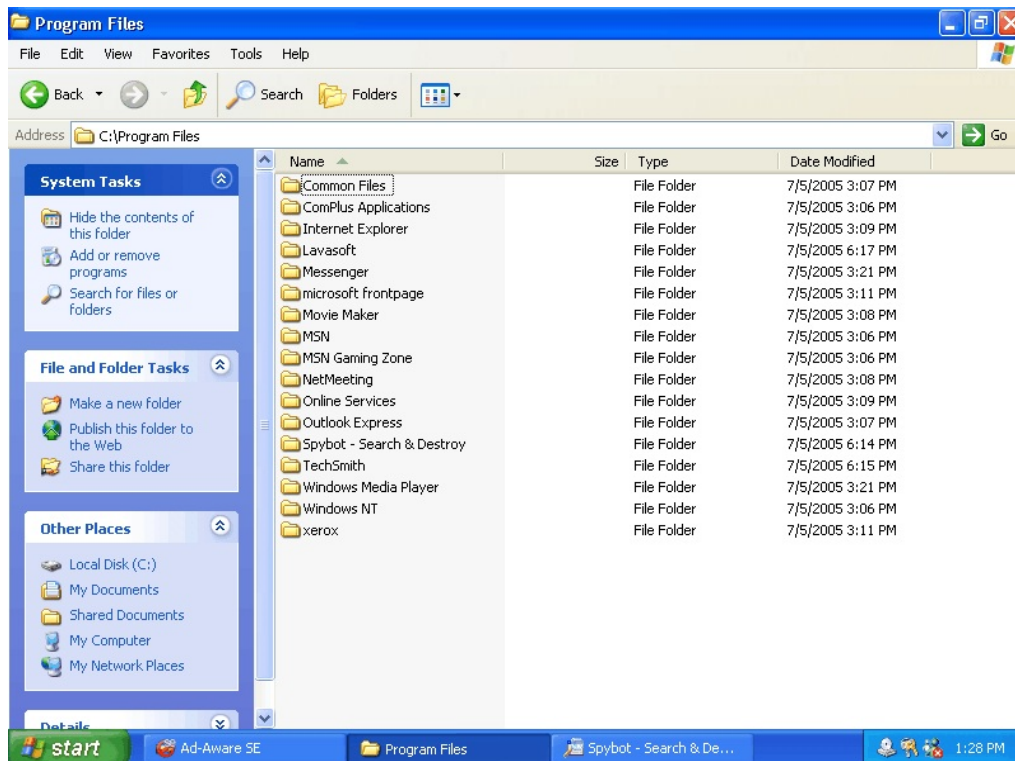


Exhibit E-14:

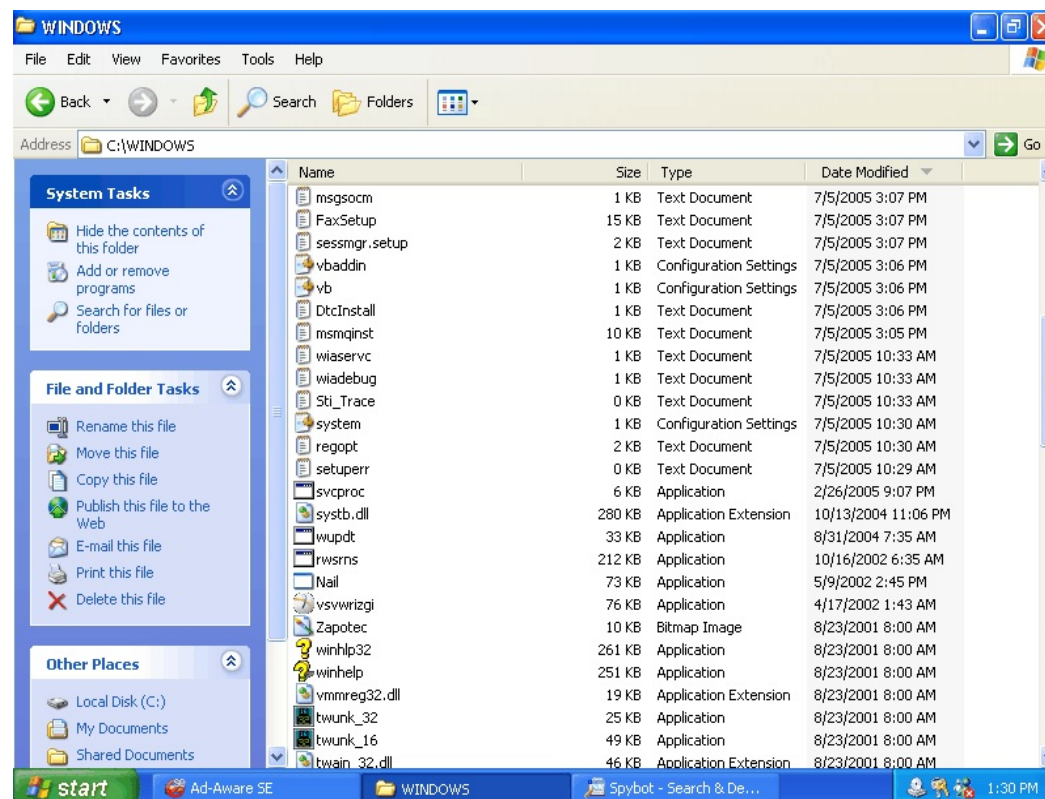
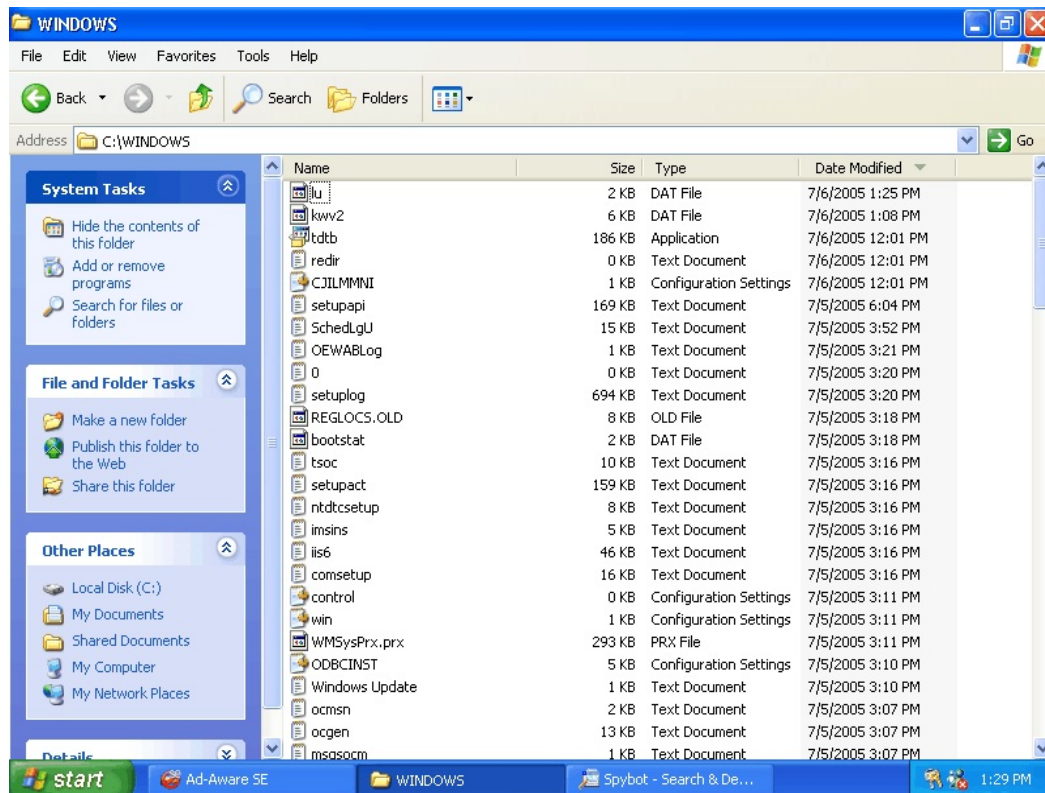


Exhibit E-14 (continued)

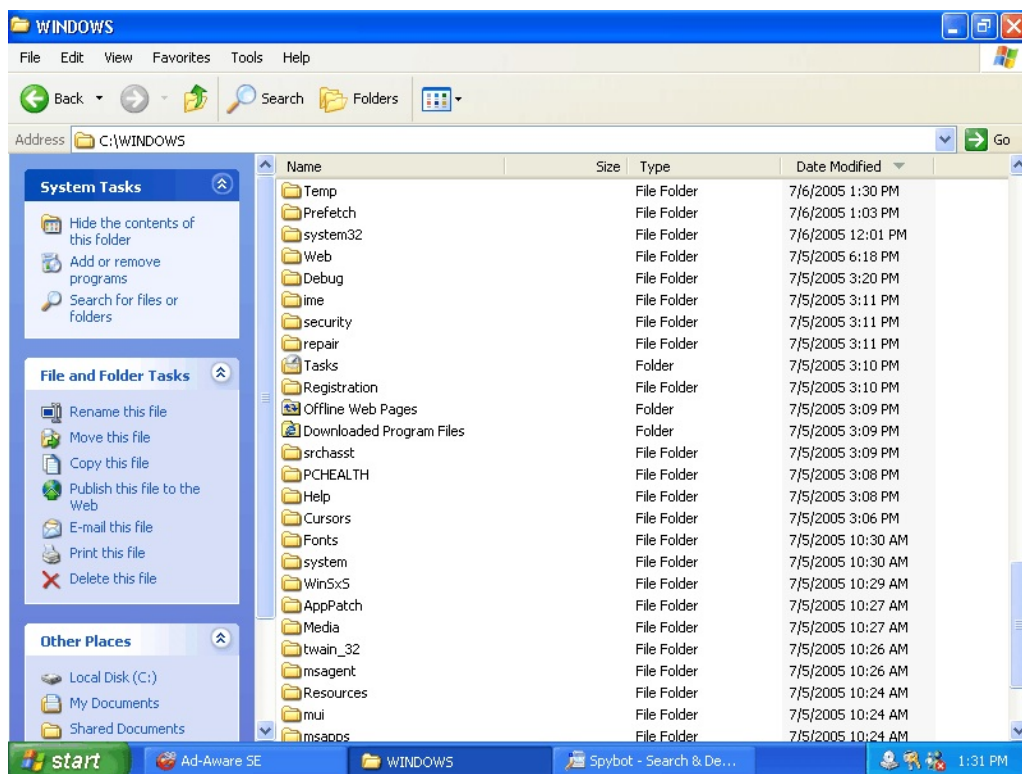
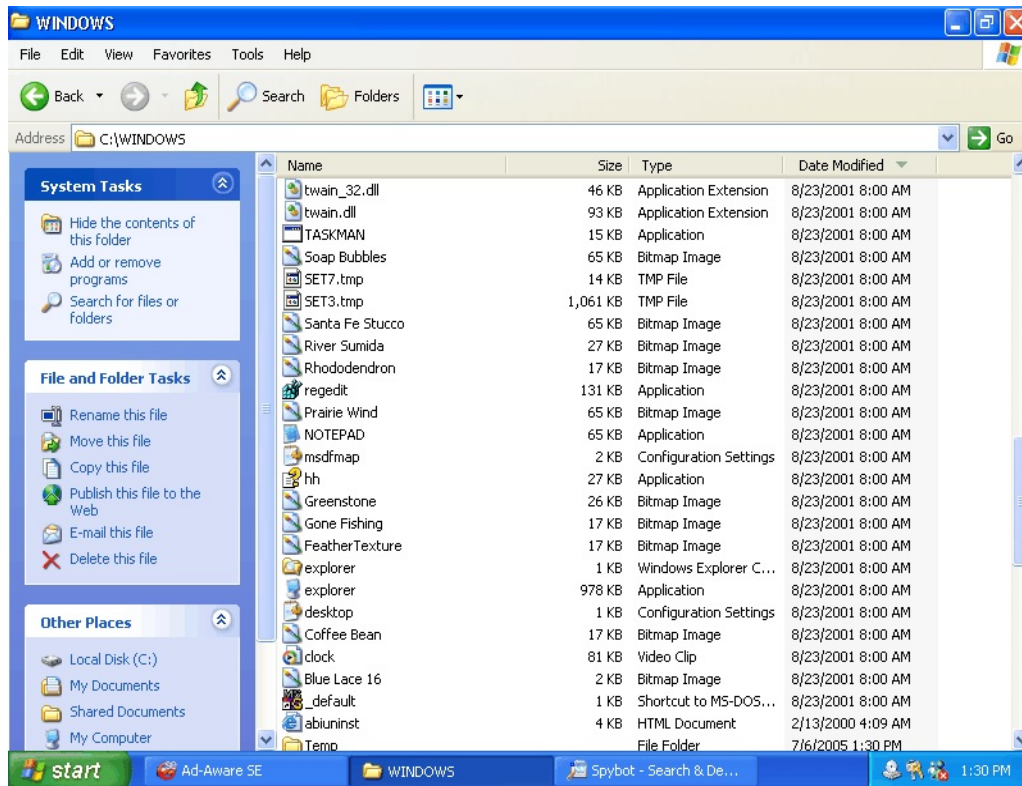


Exhibit E-14 (continued):

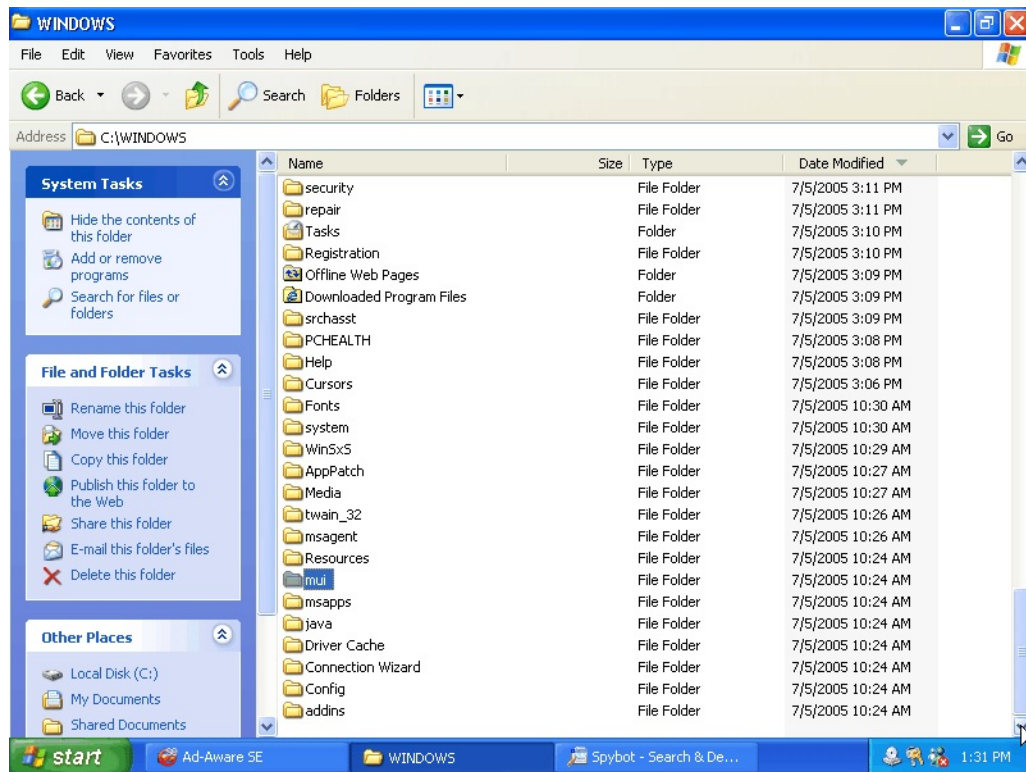


Exhibit E-15:

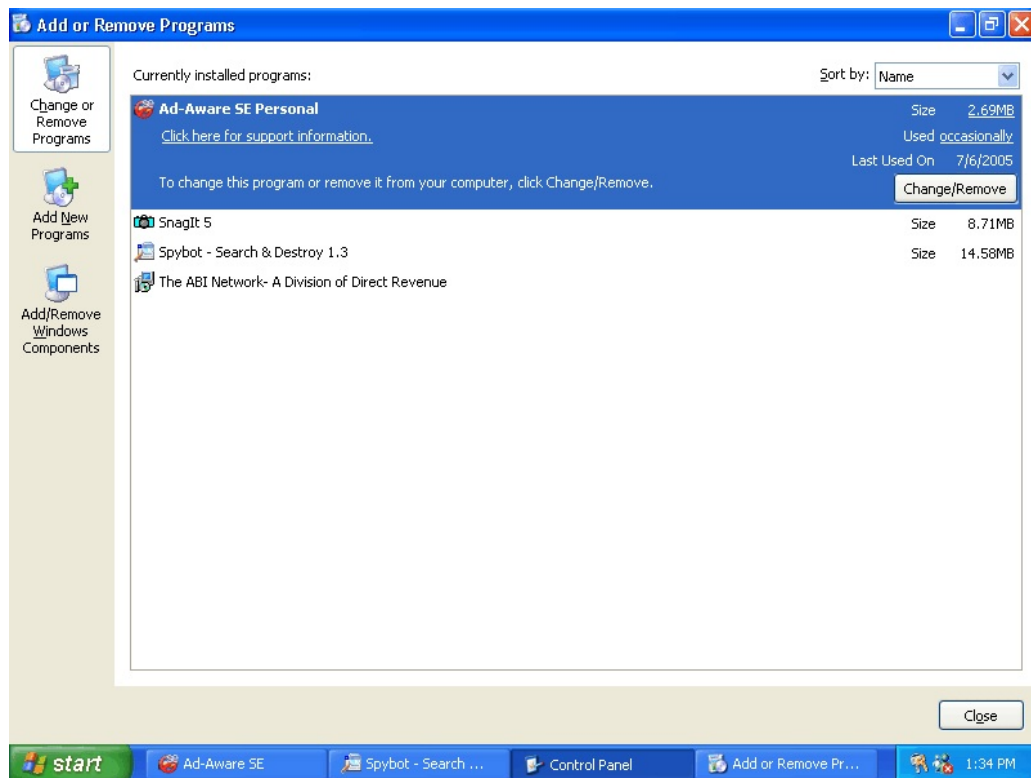


Exhibit E-16:

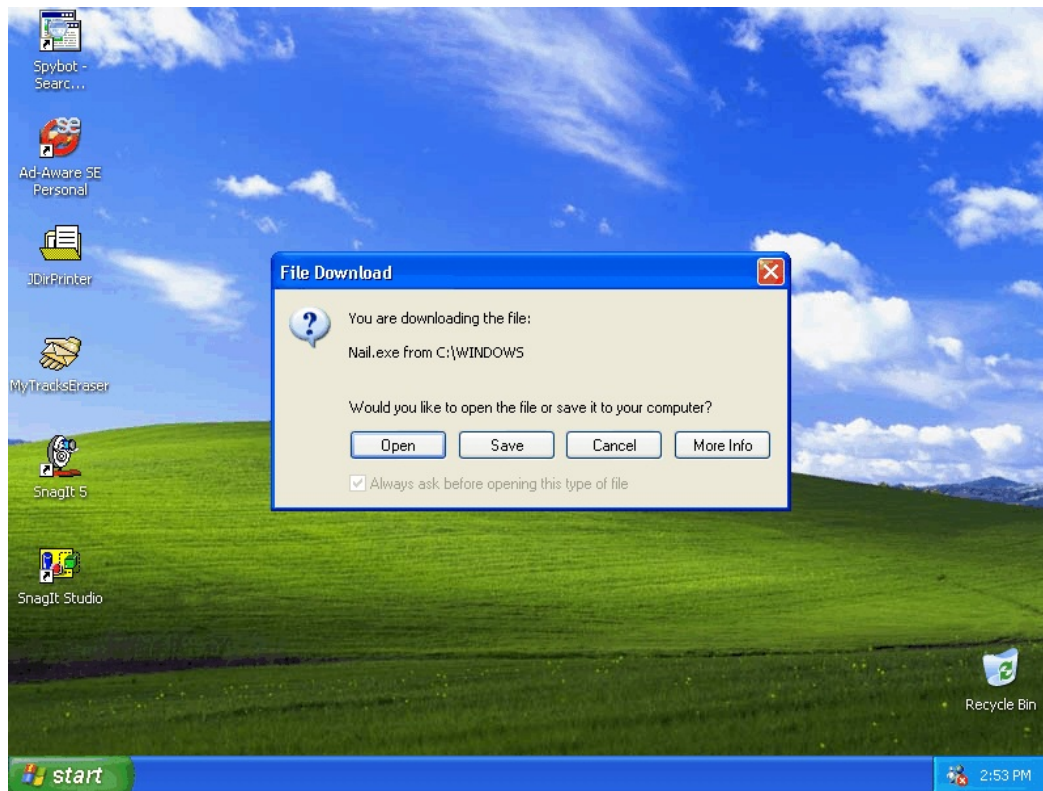


Exhibit E-17:

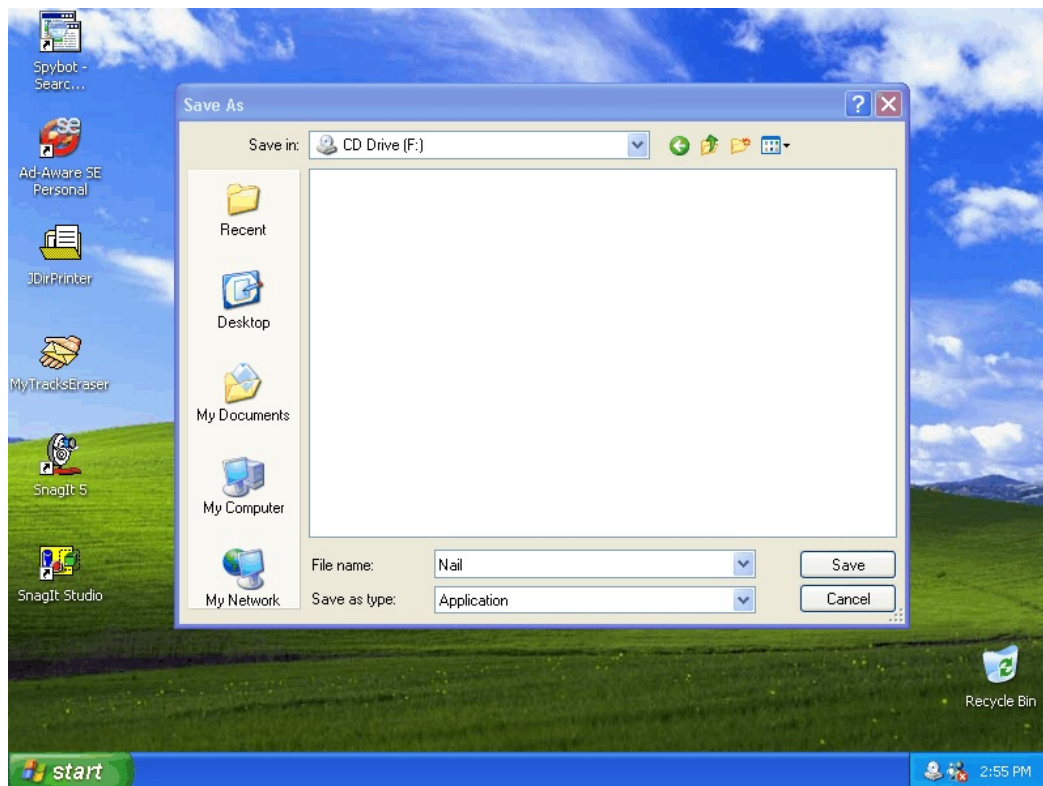


Exhibit E-18:

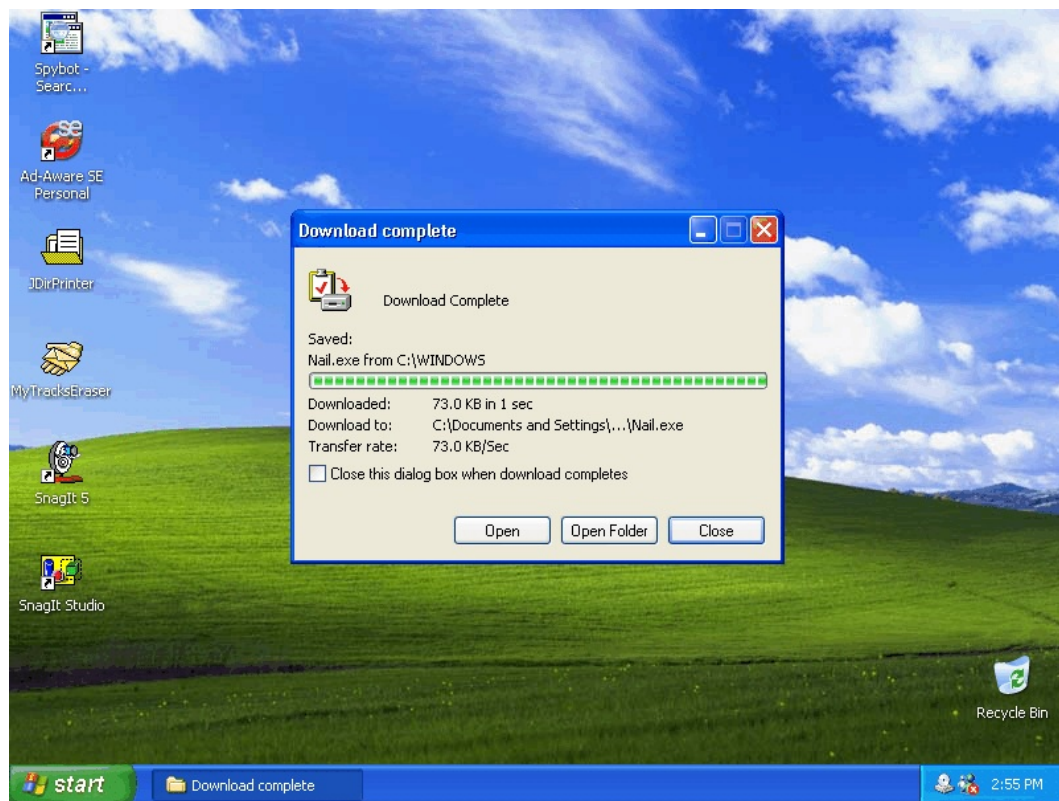


Exhibit E-19:



Exhibit E-20:

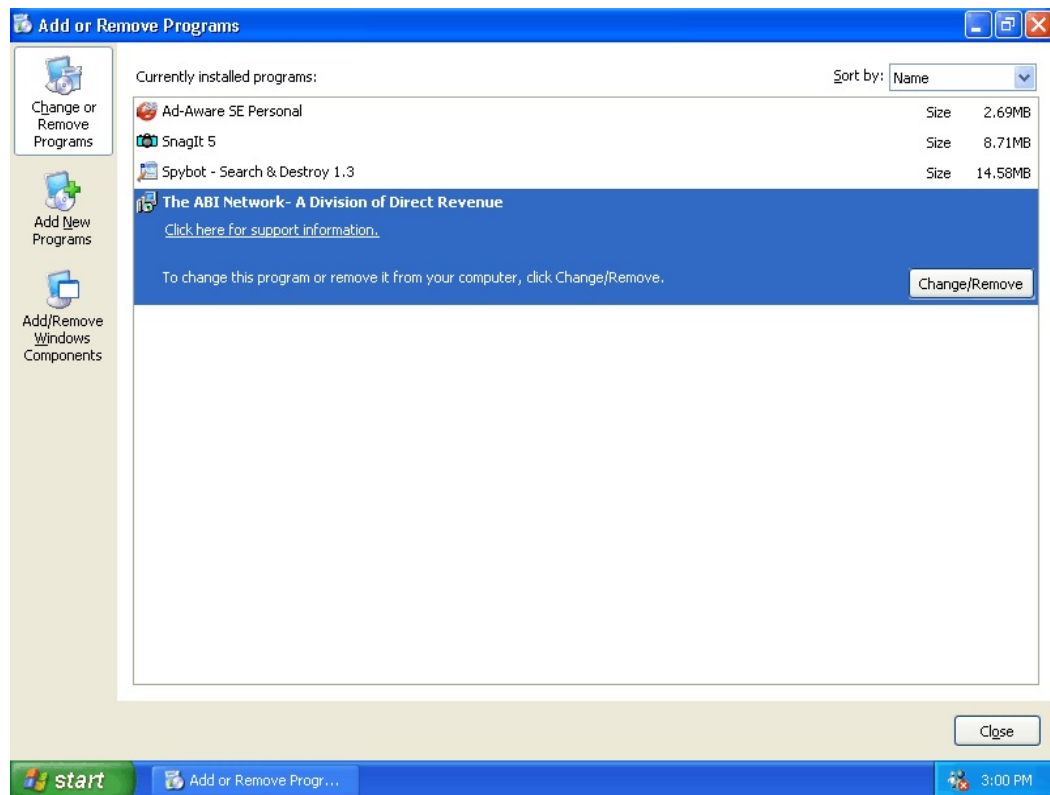


Exhibit E-21:

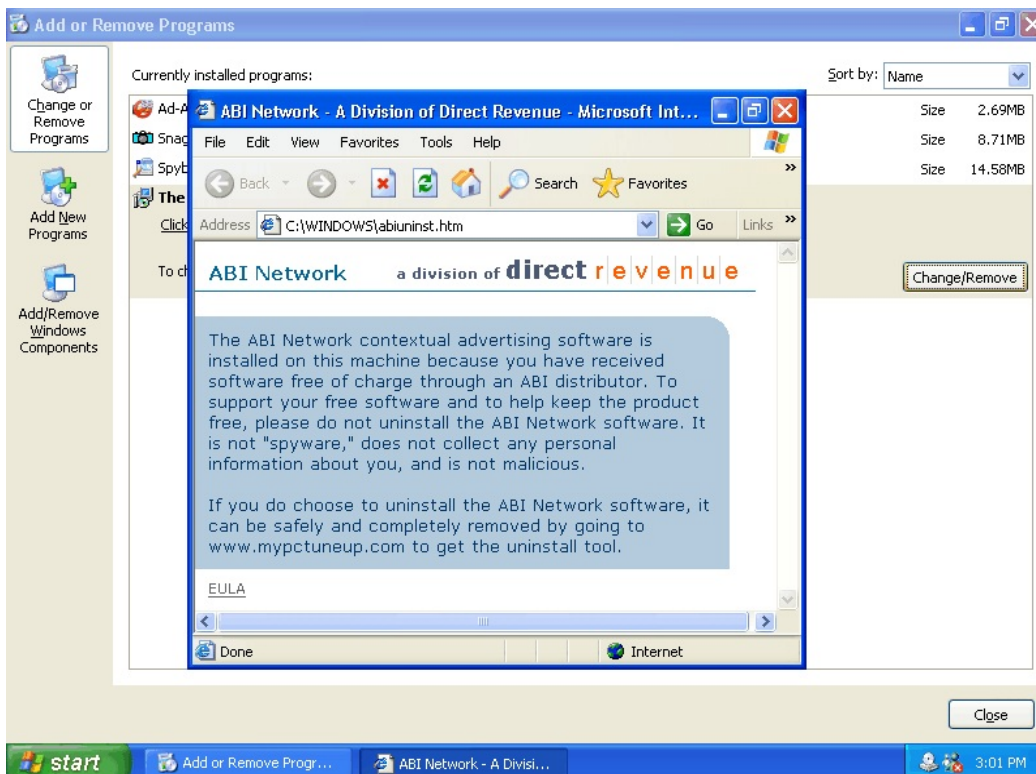


Exhibit E-22:

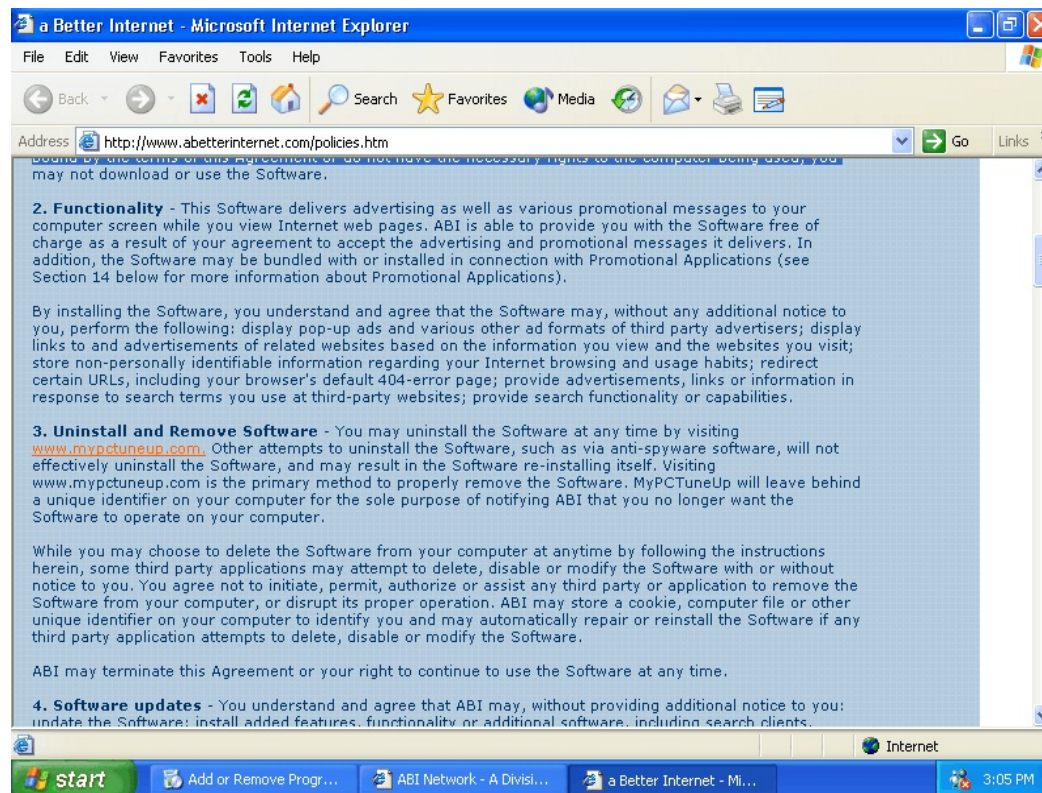
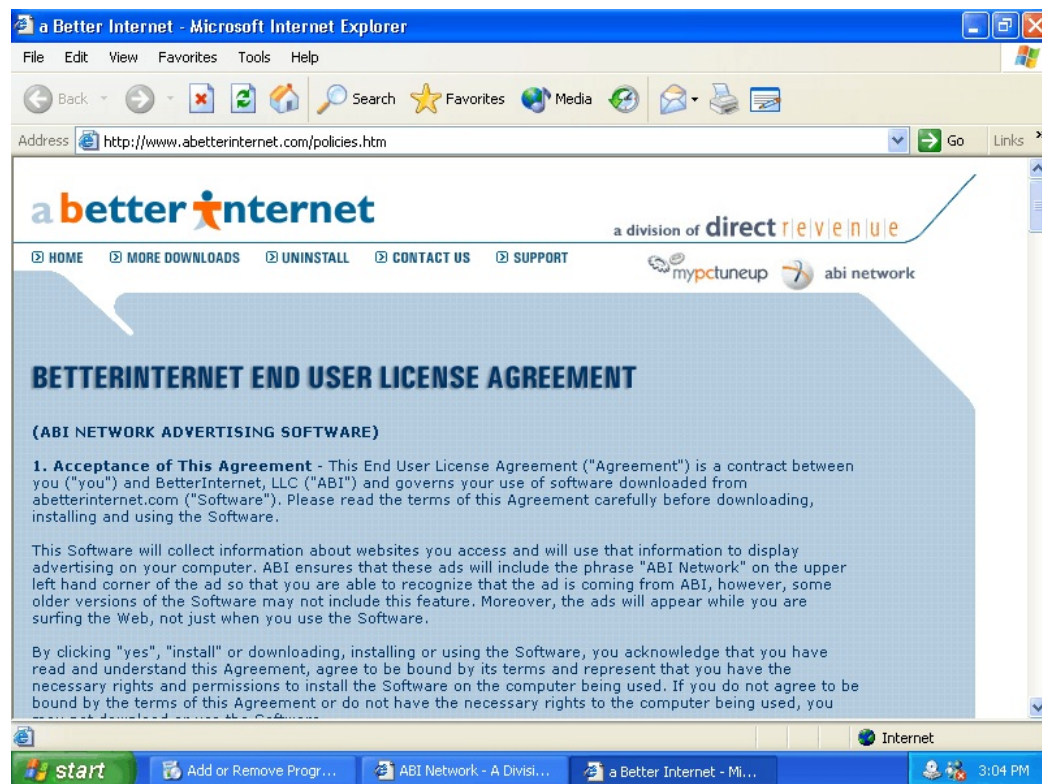


Exhibit E-22 (continued):

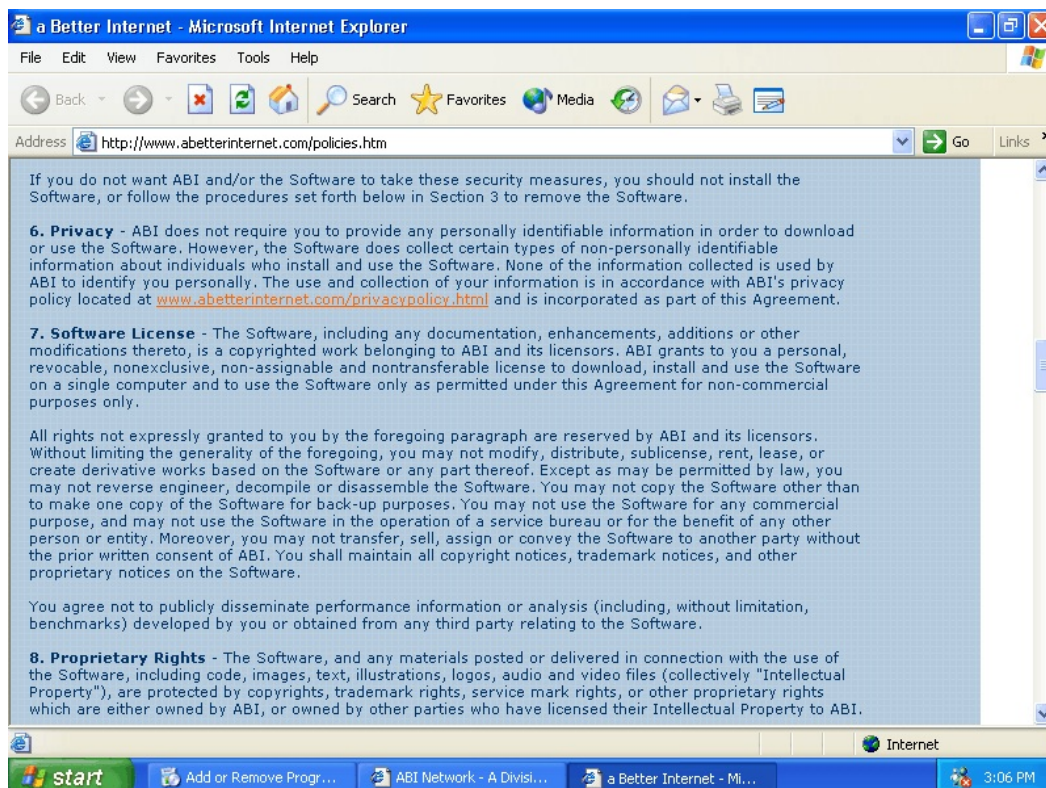
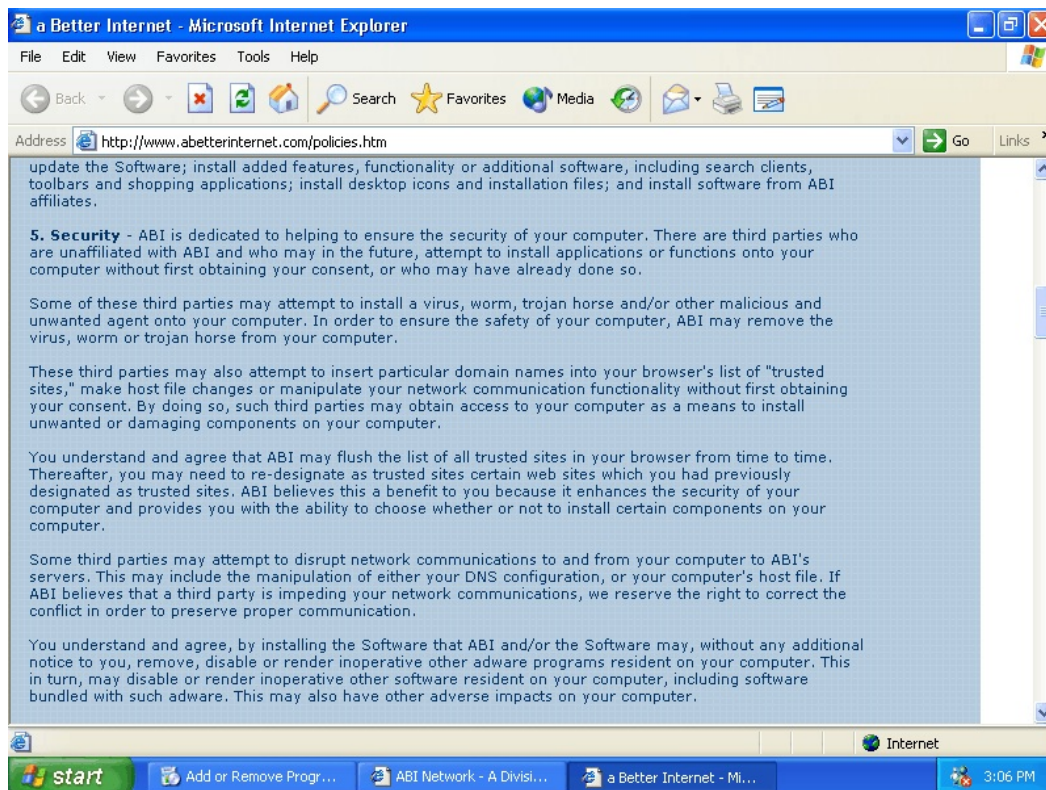


Exhibit E-22 (continued)

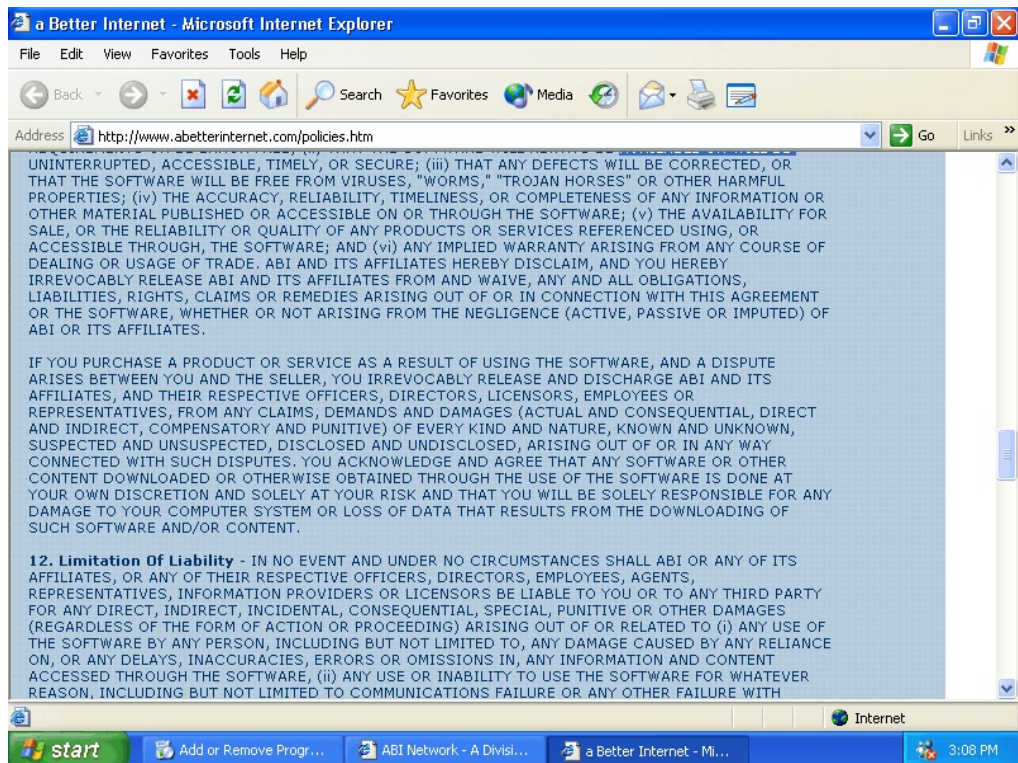
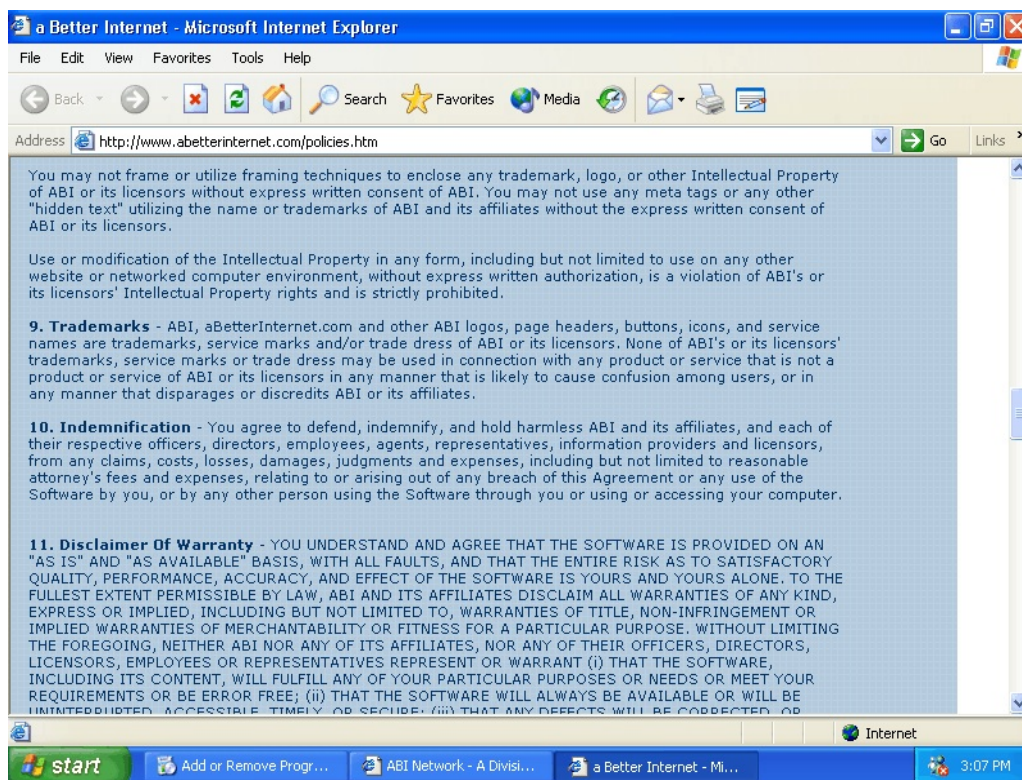


Exhibit E-22 (continued)

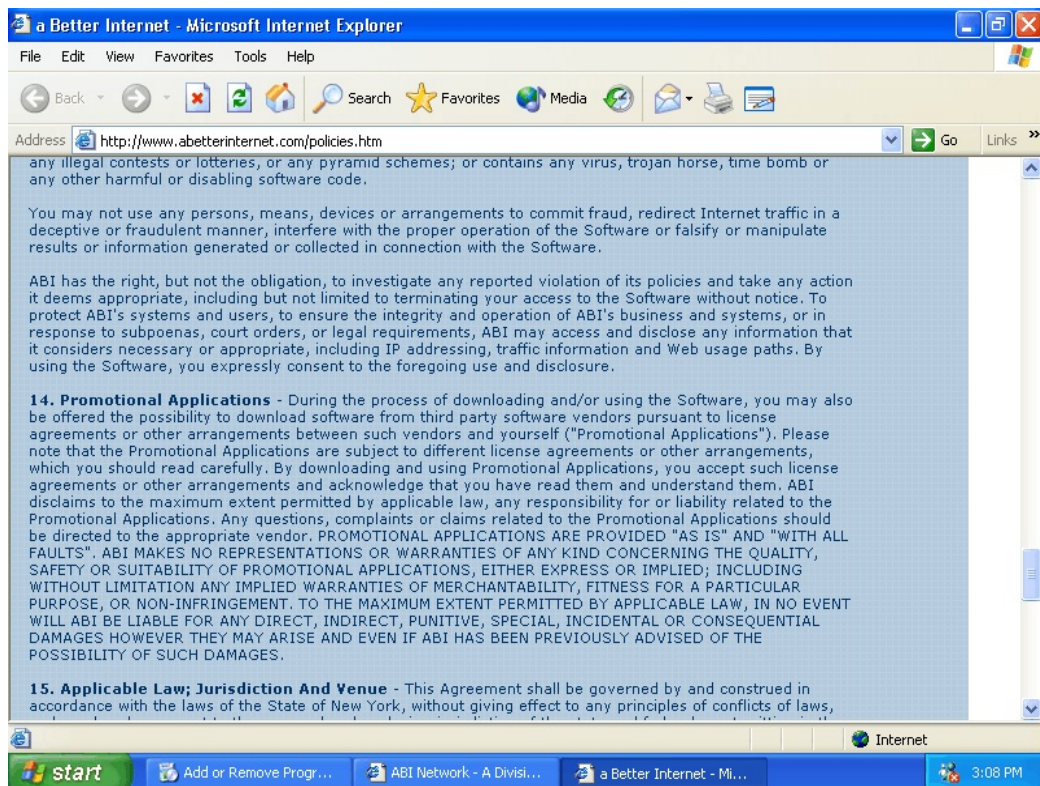
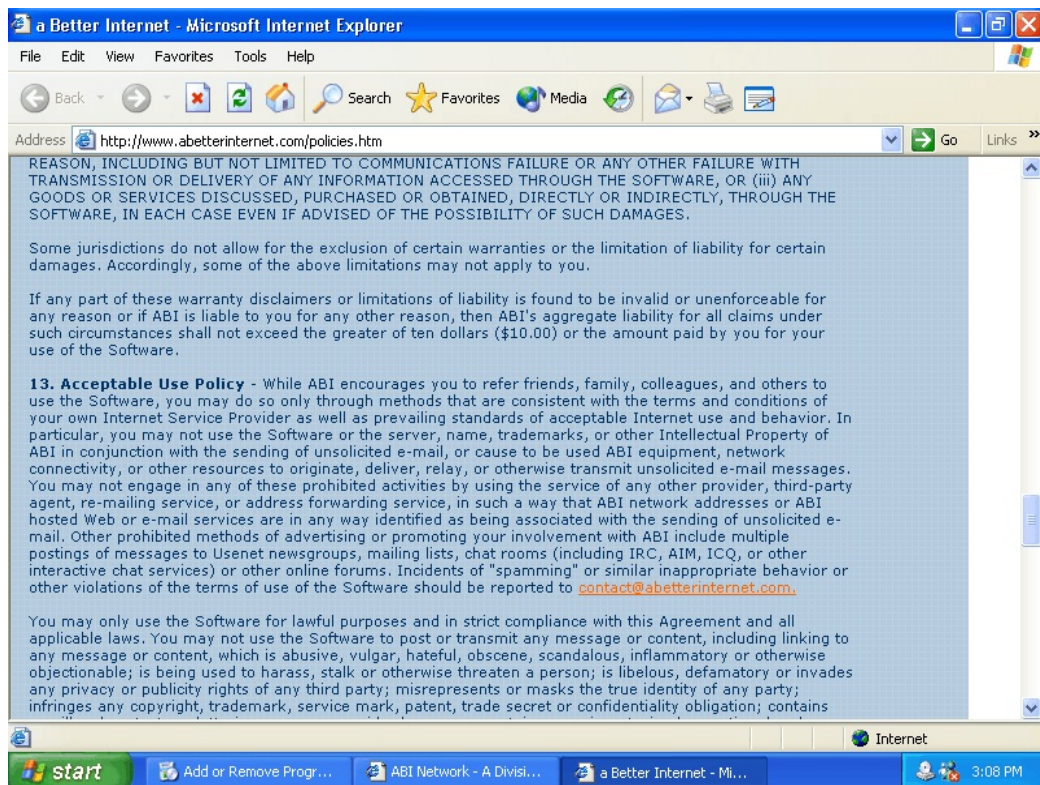


Exhibit E-22 (continued)

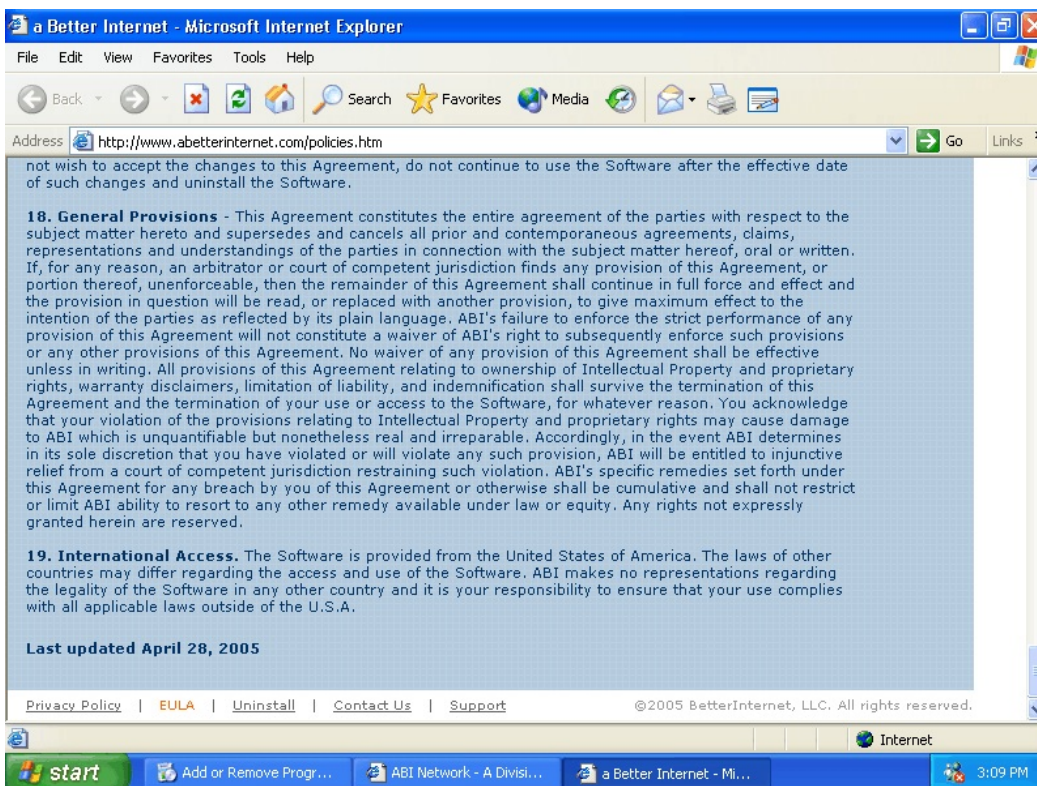
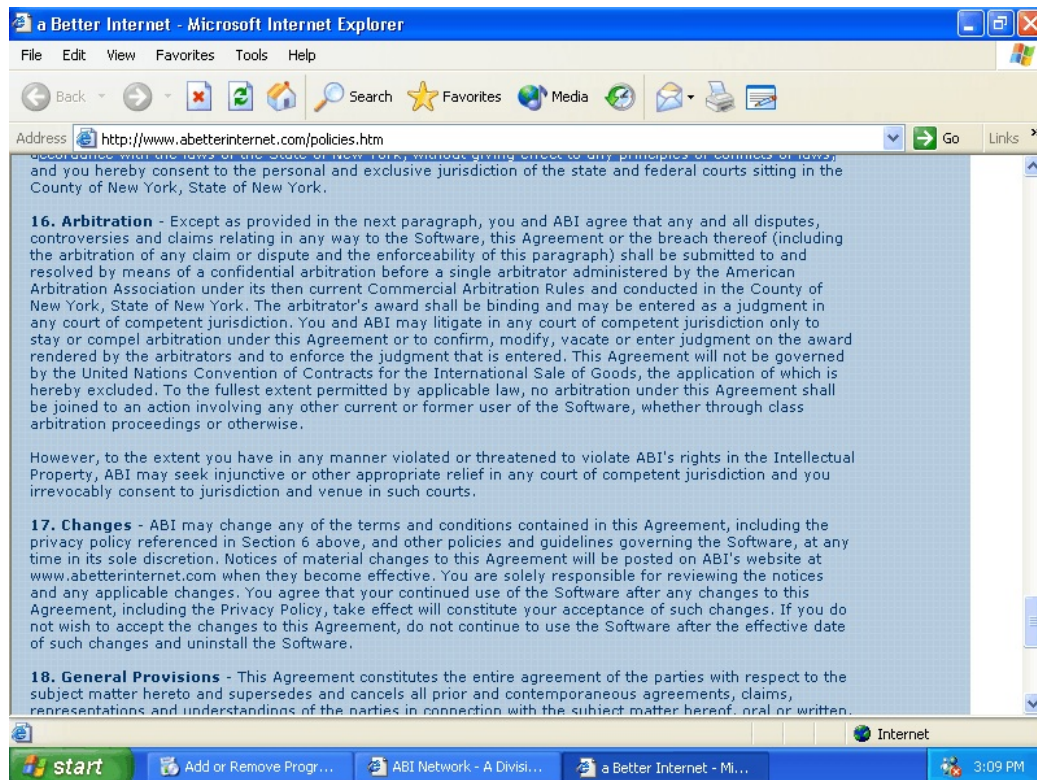


Exhibit 23:

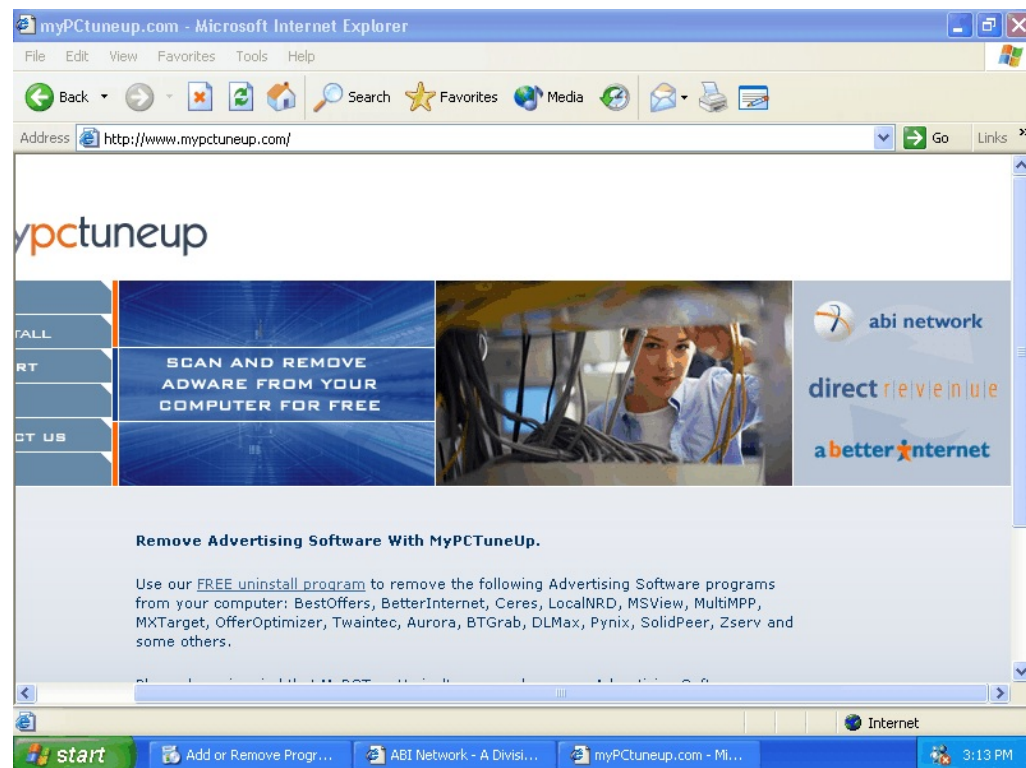
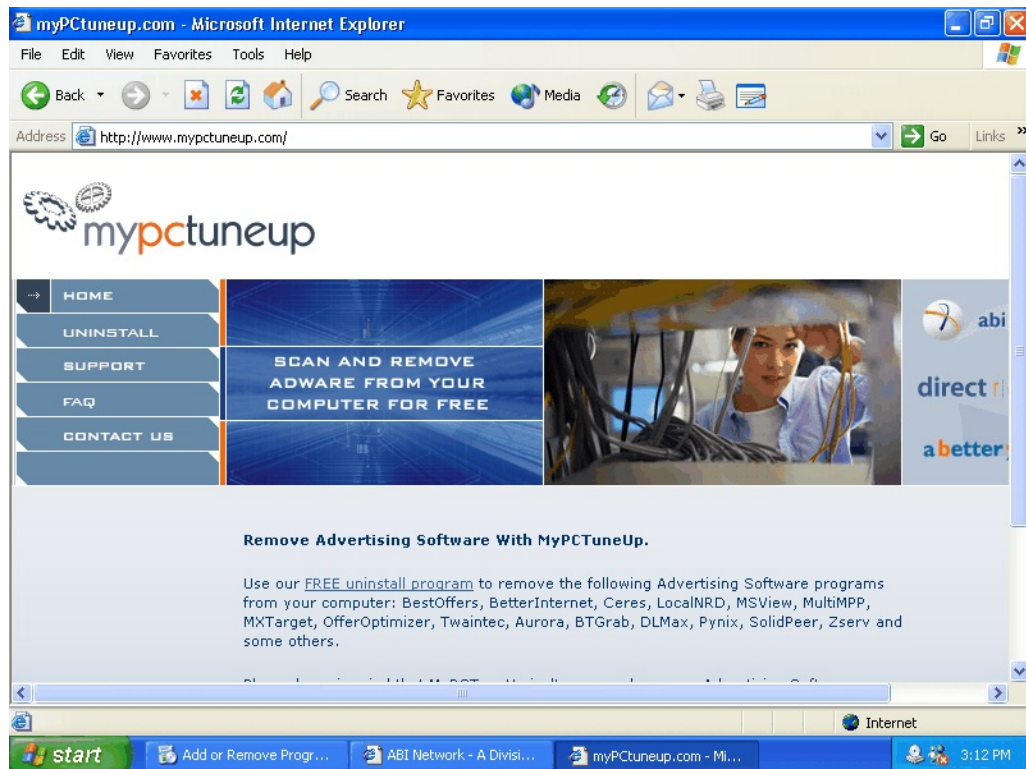


Exhibit E-23 (continued):

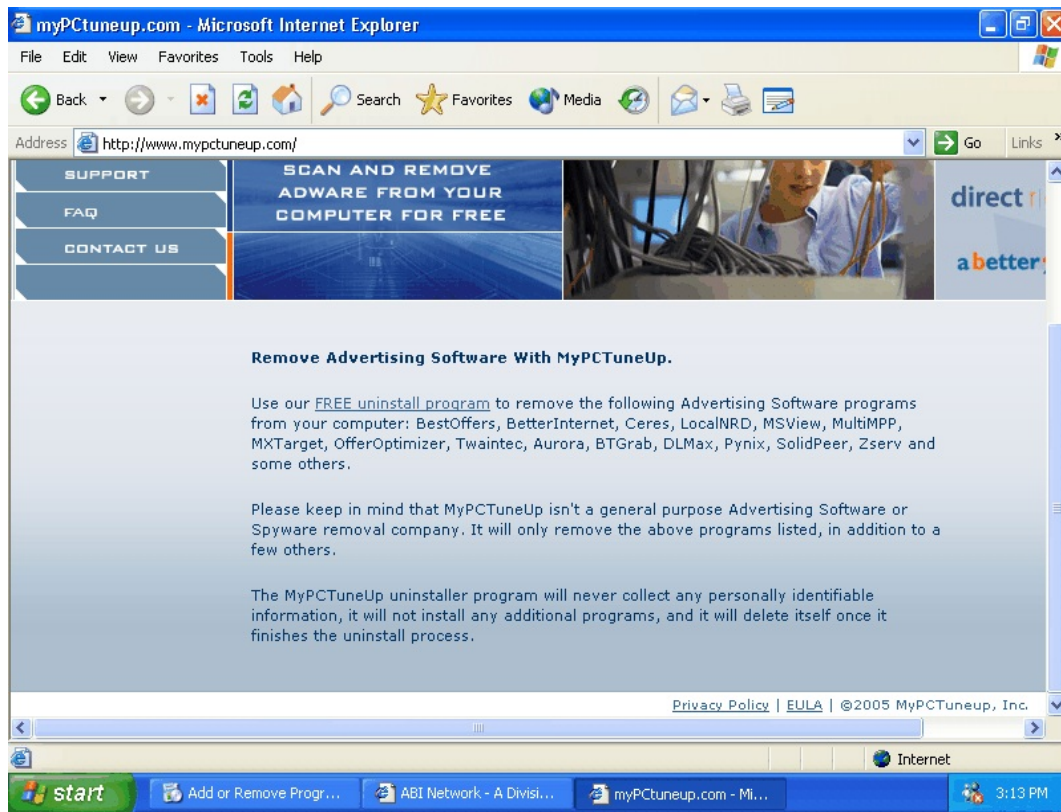


Exhibit E-24:

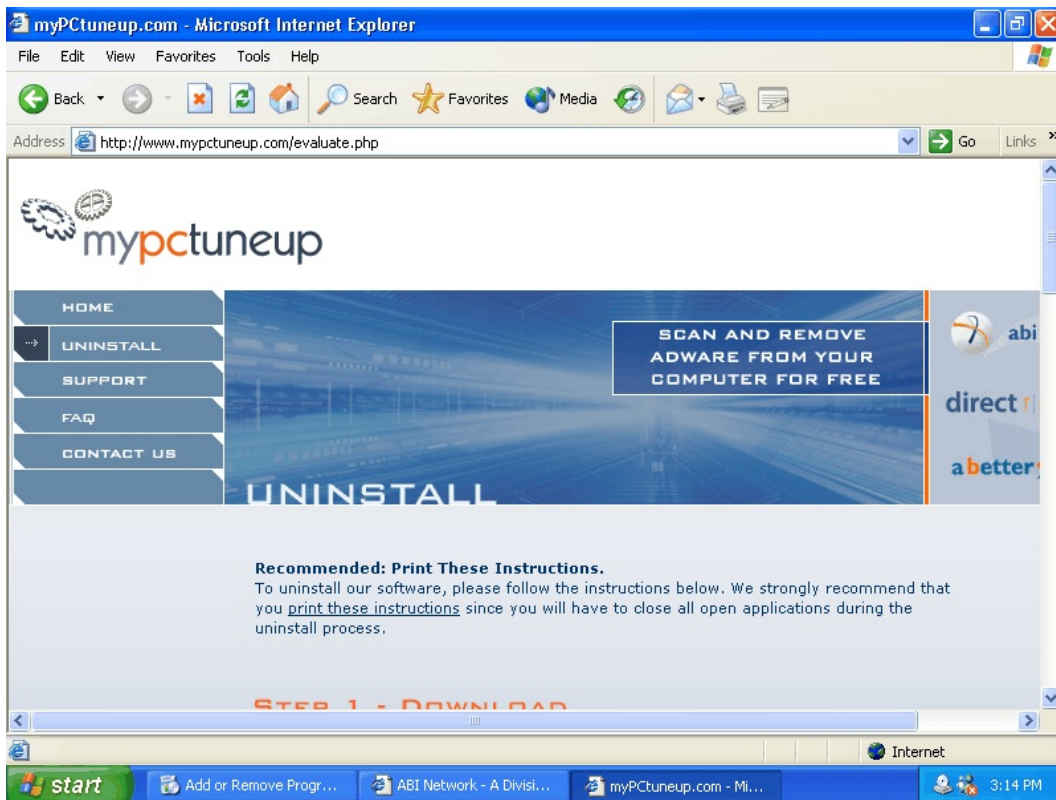


Exhibit E-24 (continued):

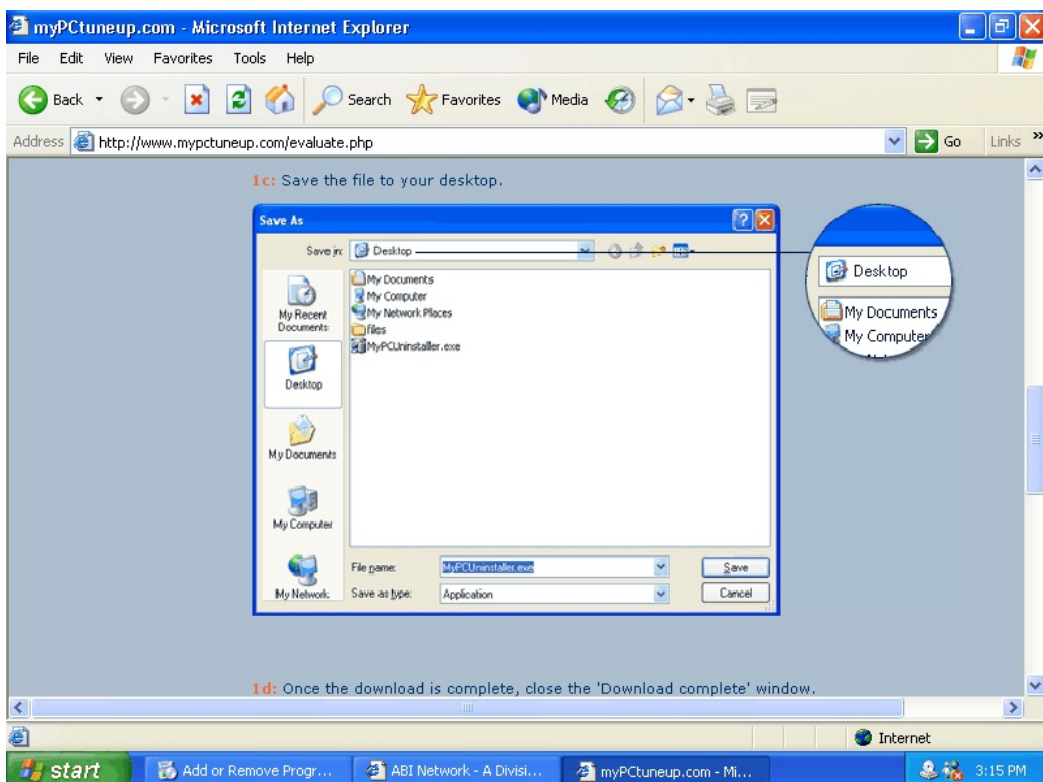
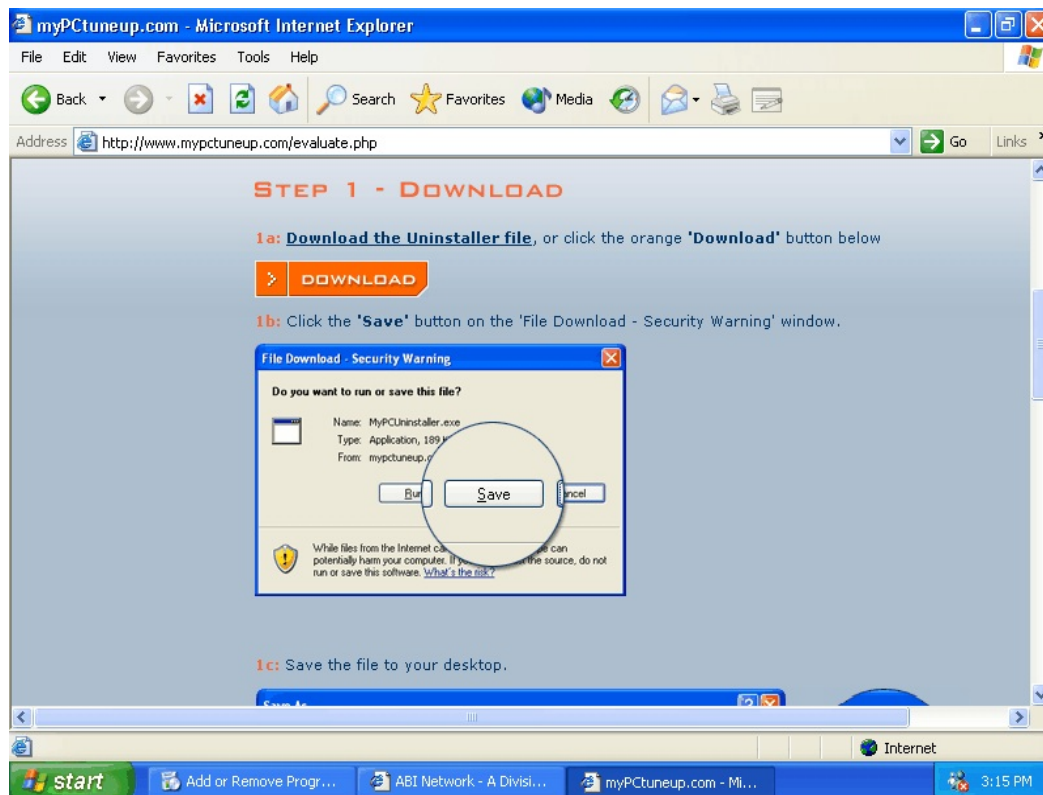


Exhibit E-24 (continued):

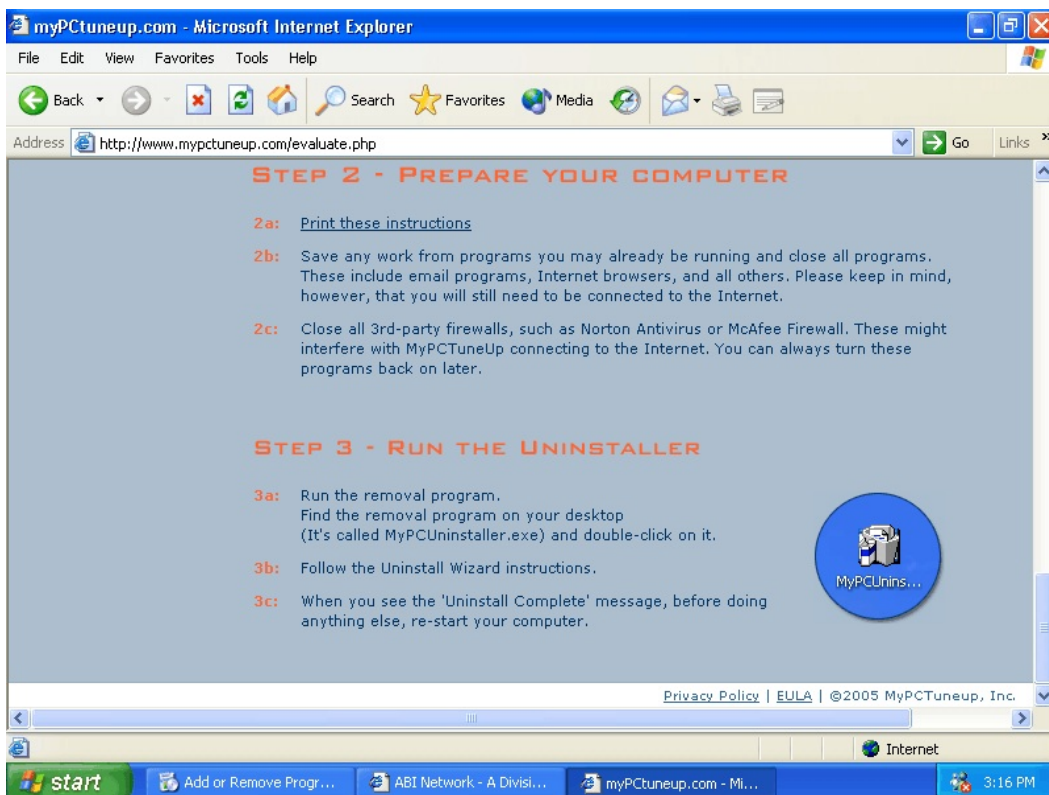
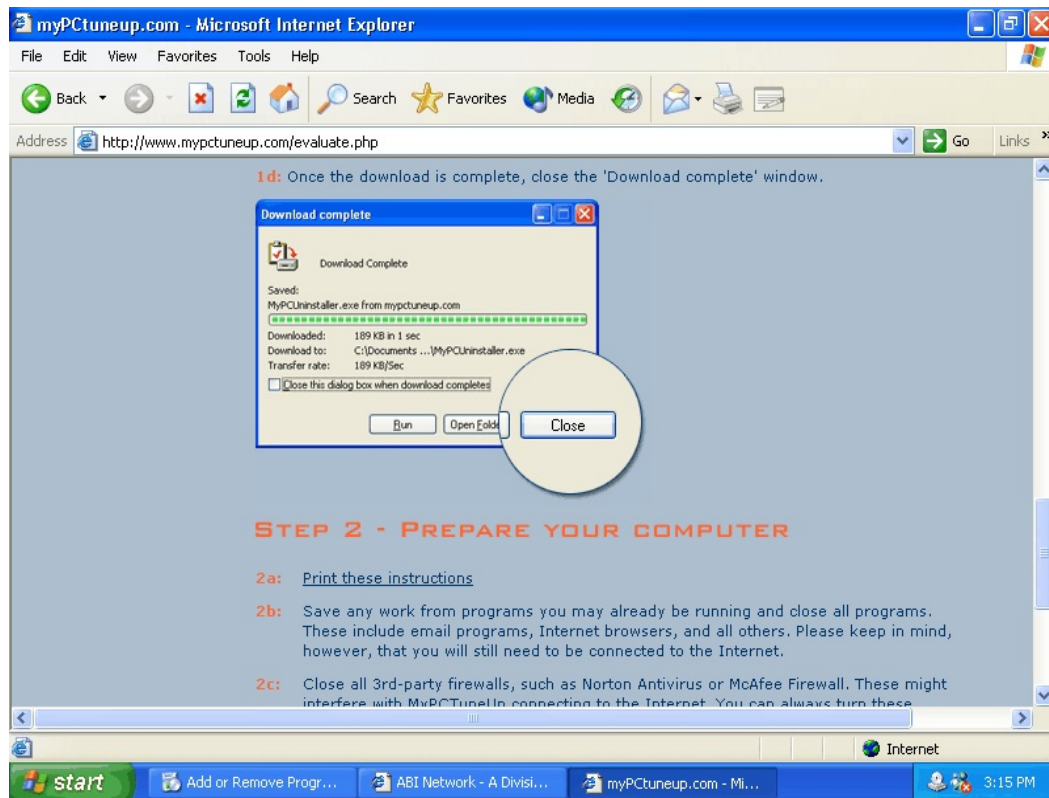


Exhibit E-25:

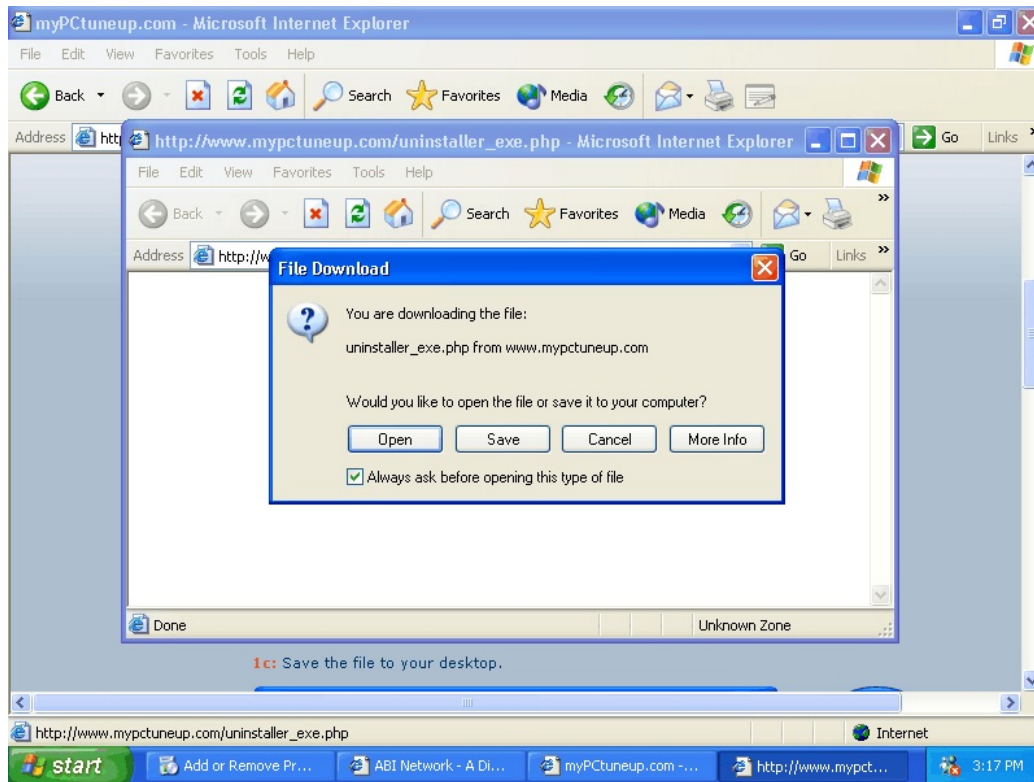


Exhibit E-26:

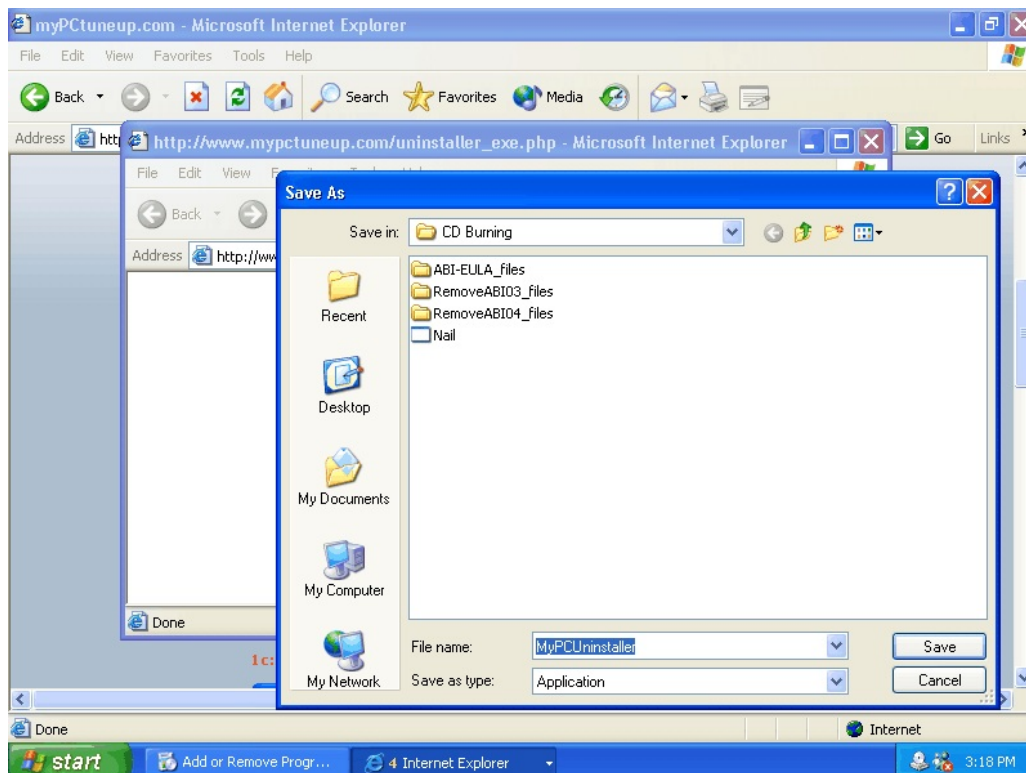


Exhibit E-27:

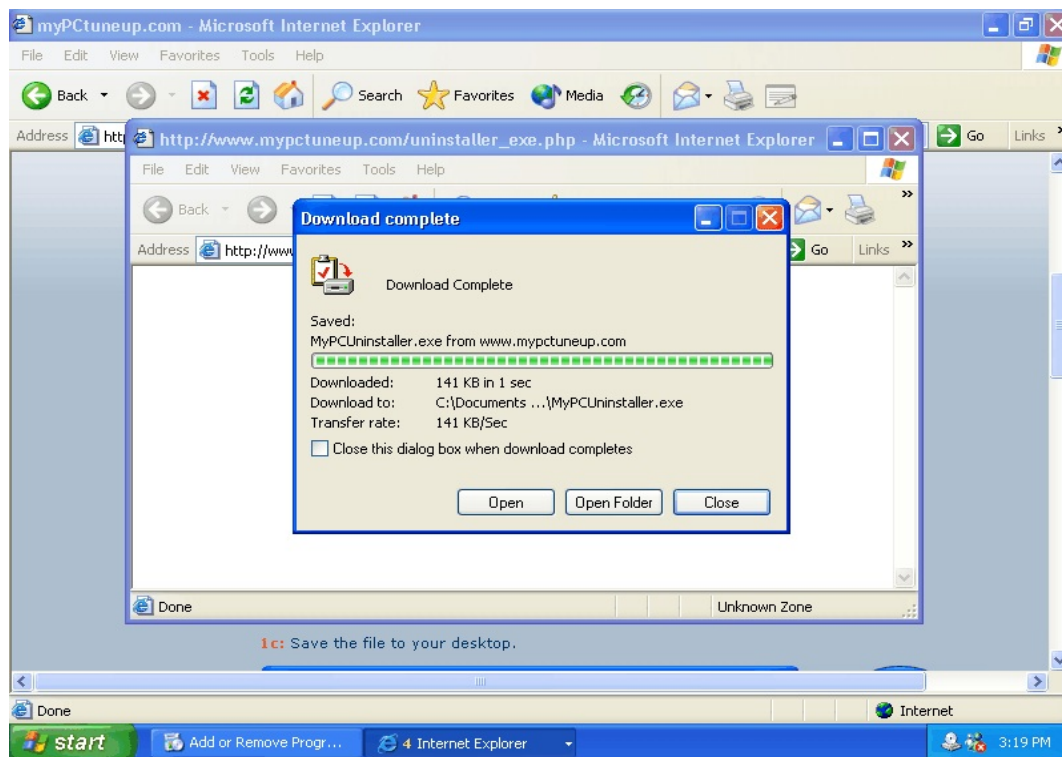


Exhibit E-28:

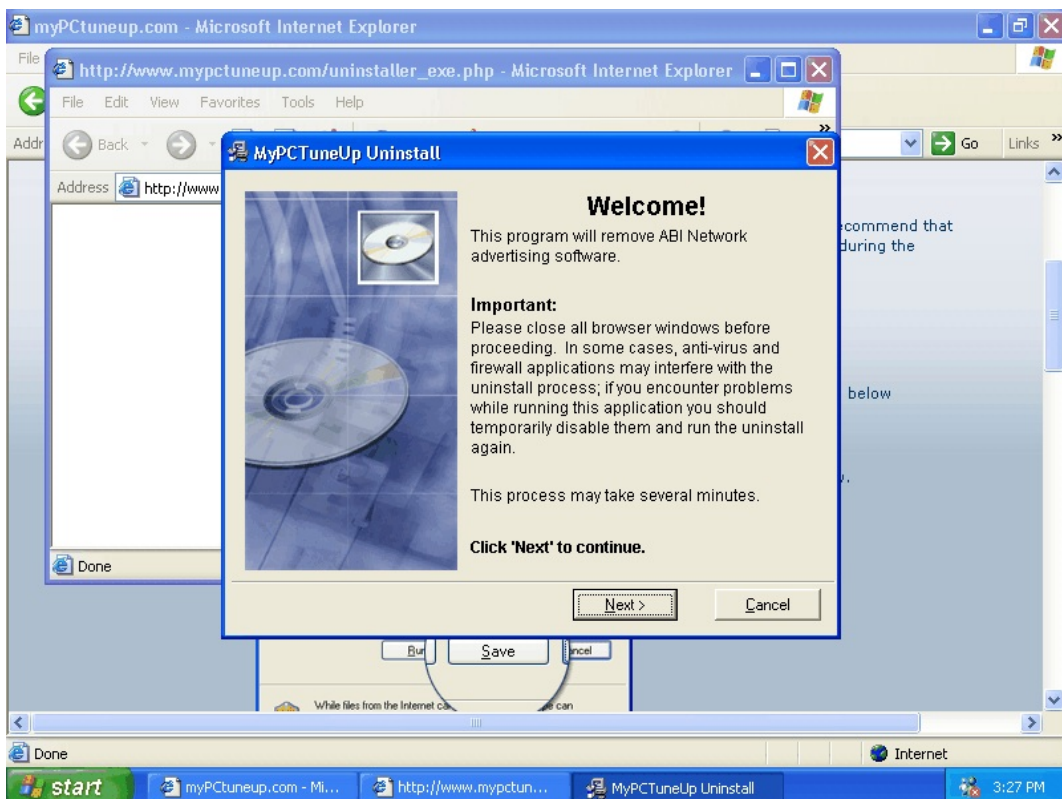


Exhibit E-29:

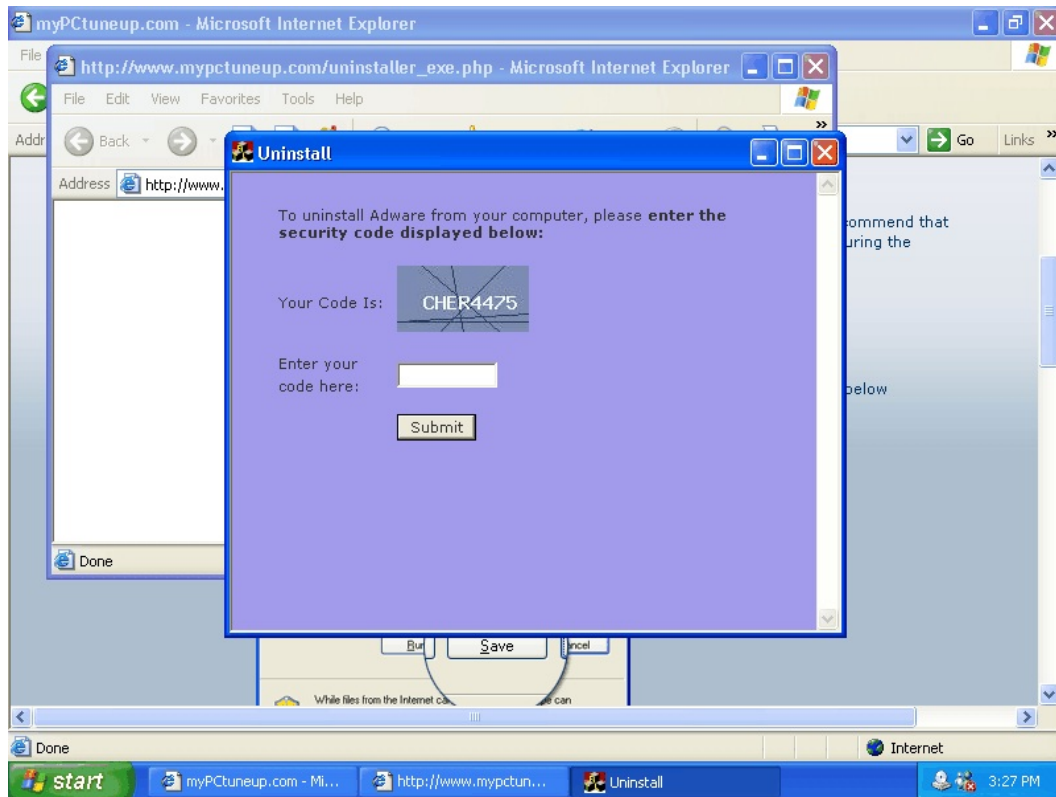


Exhibit E-30:

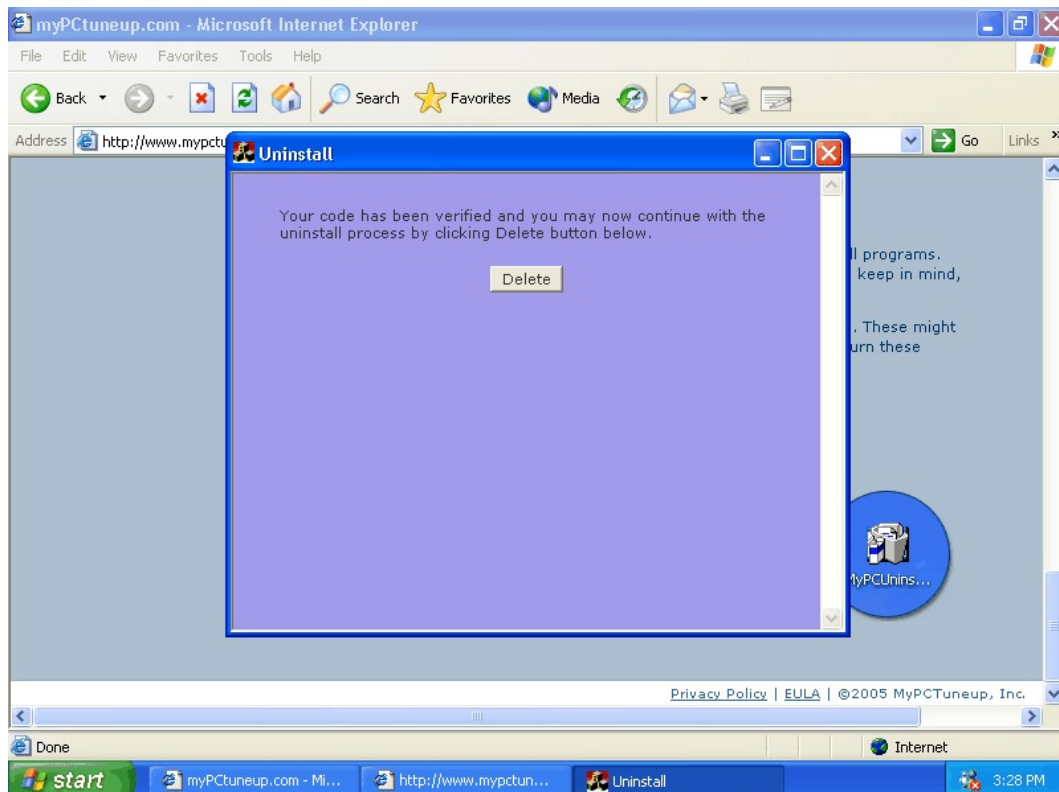


Exhibit E-31:

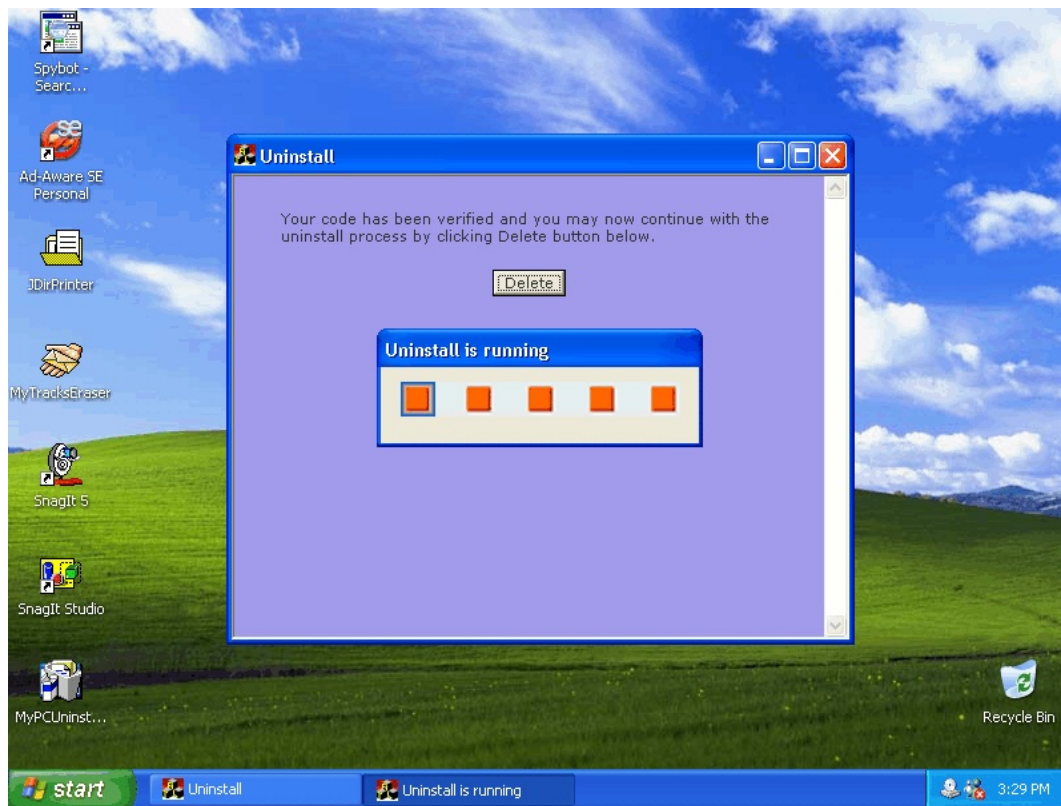


Exhibit E-31 (continued):

